

Green Lake County

4-H Focus Newsletter



March/April 2023

INSIDE THIS ISSUE

4-H Leaders' Association	2
4-H Club Happenings / Archery	3
4-H Cooking & Healthy Living / Five County 4-H Summer Camp	4
T-shirt Design Contest	5
4-H Opportunities	6-8
4-H Candy Company Workshop	9
Mental Health First Aid	10-11
Wildlife & Forestry 4-H Art Contest	12-13

Green Lake County 4-H Website:

glc4h.org

State 4-H Website:

<https://4h.extension.wisc.edu/>

4-H Animal Science Events:

<https://fyi.extension.wisc.edu/wi4haganimalscience/>

Wisconsin State Fair Website:

www.wistatefair/fair/



Green Lake County 4-H

Upcoming County Programs

Intro to Paper Circuits: Explore circuits and complete electrical circuits that will power an LED in numerous hands-on experiments that participants can take home with them! Paper Circuits is designed for youth in grades 5-8, but any age may participate. If youth are younger, it may be helpful for them to have adult assistance. Registration open to the first 12 youth at each library. Contact the libraries below to sign up!

- April 18 at 3:45 pm, Berlin Public Library (920-361-5420)
- April 21 at 1:00 pm, Caestecker Public Library (920-294-3572)

Marshmallow Rockets: Explore rockets, astronauts, and space exploration as we build a model rocket out of marshmallows! Marshmallow Rockets is designed for youth ages in grades 5K-4, but any age may participate. Registration open to the first 12 youth at each library. Contact the libraries below to sign up!

- March 15 at 10:00am, Markesan Public Library (920-398-3434)
- March 21 at 10:00am, Berlin Public Library (920-361-5420)
- March 28 at 3:45pm, Caestecker Public Library (920-294-3572)

March

2nd; Leaders' Association meeting at 7:00pm,
Training Room GLC Gov. Center

April

- 6th; Leaders' Association meeting at 7:00pm,
Training Room GLC Gov. Center
- 18th; Livestock Council meeting at 6:30pm,
Training Room GLC Gov. Center

mark  your **Calendar**



4-H LEADERS' ASSOCIATION

• February 2, 2023 Zoom Meeting •



Treasurer Report: Moved to Audit

Secretary Report: Motion by David to approve and second by Beth Howman Combs. Motion passed

Correspondent: None

Ambassadors: David reported on Spring and Summer projects

Archery: started shoots in Berlin and Montello. Questions can be sent to Doug

Dog Project: No Update

Horse Club: Next meeting April 18th at 6:30 at Government Center

Livestock Council: Next meeting Tuesday April 18th at 6:30

Educational Opportunities and Awards:

- Workmanship Scholarship – will have more information at next meeting
- Art Camp – Araya Gradel gave a talk on attending Art Camp at Upham Woods
- 4-H Project Enhancement Program – will talk more at the next meeting.
- 4-H Scholarship Application are due March 15th
- Check out website for many updates on different events



4-H Leaders' Association Academic Scholarship- Due March 15

The Green Lake County 4-H Leaders' Association will be sponsoring two (2) five hundred dollar (\$500) academic scholarships that can be used at any public or private college, university or technical school. Youth can only be selected once for this scholarship. Applicants must be a high school senior or college freshman at time of selection and an active member of GLC 4-H for at least 3 years.

Scholarship application and details are located <https://greenlake.extension.wisc.edu/2023/01/30/glc-4-h-leaders-association-due-march-15/>

4-H Educator Update

- Website updated with information by category, several opportunities available currently

4-H camp Update

- 1) Moving to a new facility this year – Camp Lakohta in Wautoma
- 2) Will now be 4 days and 3 nights
- 3) June 11th to 14th
- 4) Will be an increase in price – around \$230
- 5) Discuss at next meeting potential support to Campers

Fundraising Committee

- Will send out information to the list again. Looking at doing that in the next month

Slushy machine at Fair Update

- Miranda gave an update on a quote from a company from Green Bay. There were a few questions that came up that required more information. Will bring additional information next month and would like to make a decision by next Meeting.

Motion was made by David and seconded by Miranda to adjourn the meeting. Motion passed.

Next meeting March 2nd at 7 pm at the Government Center in Green Lake.

*Respectfully submitted by,
Brenda Ott*



4-H Ambassador Food Drive

4-H Leaders: Please announce at your March meetings to bring nonperishable food pantry donations to April meetings.

4-H Members: Please bring nonperishable donations to April meetings.

The 4-H Club that donates the most items wins a pizza party compliments of the Green Lake County 4-H Ambassadors!

4-H CLUB HAPPENINGS!

Country Clovers Meeting Minutes

The meeting of the Country Clovers 4-H club was held on February 12, 2023 at the Green Lake Town Hall. We welcomed new club members. The treasurer's report was read by Tyler. The secretary's report was read by Emma and approved by Katelyn and seconded by Jenna. Our meeting started off by talking about how our awards party at Plaza Bowl in Ripon was completely paid for by kind citizens and the Markesan Lions Club. We also collected both souper bowl boxes that we put out at Crossroads in Green Lake and Piggly Wiggly in Markesan to gather canned goods for the Green Lake County Food Pantry. The fair sponsorship we all agreed on donating 75 dollars towards it. We will be having a snow tubing event on March 3rd at Nordic Mountain as a group. After we go tubing we will have our meeting there. The Slark family is giving a show sheep lamb giveaway to 1st year and 2nd year exhibitors. You need to apply for the award and they look at



the applications and choose the winners by March. Everyone is to make sure they are enrolled for the new year by March 1st in order to exhibit at the fair. Katelyn held a youth leadership project meeting. She showed our group how to make valentine cow paper plates. Kylee did a demonstration on how to make sugar cookies. After her demonstration we decorated the cookies for Valentine's Day and they will be delivered to a local nursing home. We then got a picture with all of our canned goods from the souper bowl boxes. Our next meeting will be held on March 3rd, 2023 at our tubing event at Nordic Mountain.

Emma Draeger, Seneca 4-H Secretary



4-H Archery Competitive Shoots

All registration forms and more information:

<https://4h.extension.wisc.edu/opportunities/projects/shooting-sports/competitive-shoots/>

Eligibility to participate in competitive events.

All 4-H members must be:

1. Currently enrolled in a 4-H Shooting Sports project.
2. Actively participating in 4-H Shooting Sports training or having successfully completed 4-H Shooting Sports training.
3. Participating with the approval of their 4-H Shooting Sports certified instructor.

Tri County Tournament March 31-April 1

Location: Washington County Fair Park, 3000 Hwy PV, West Bend, WI (Hwy 45 South of West Bend)

Events will run from 4-9pm on March 31st, and 6:30am-5pm on April 1st. Registration deadline: Saturday, March 11 (see registration forms for more information). Family Fun Activities during the tournament.

Karl Peterson Competitive Shoot April 22

- Location: Mondovi Conservation Club, W450 Youth Rd, Mondovi, WI 54755
- Check in starts at 7:30am Saturday, ranges open at 8:00am.



Annual Shawano County All Star Shootout May 12-13

- Location: Crawford Center, 251 S Waukechon St, Shawano, WI 54166
- Event runs from 3:00pm – 9:00pm Friday and 8:00am-4:00pm Saturday.

Brown County Statewide Shoot June 2-3

- Location: De Pere Sportsmen's Club, 3623 Club Dr, De Pere, WI 54115
- Event times Friday, 5:00-8:00pm; Saturday 8:00am-3:00pm.

Shawano County 4-H All Star Summer Archery Shoot July 8

- Location: Shawano Archery Club, N5821 Old Lake Rd, Shawano, WI 54166

Annual Dodge County 4-H Archery Invitational July 21-22

- Location: Horicon Marsh Bowmen, N7420 Co Rd V, Horicon, WI 53032
- Event runs from 8:00am-3:00pm, registration desk opens at 7:15am.



4-H COOKING & HEALTHY LIVING

Come practice your cooking skills to create a magical fruit salad! We will learn the basics of cooking and explore healthy eating through 4-H Cooking 101

Tuesday, March 28 at 6:00 p.m.
Training Room, GLC Gov. Center

Sign up to attend by March 22 at
wi.4honline.com
 Sign in and click on events!

This program is designed for youth in grades 3-6, but any youth may participate.



An EEO/AA employer, University of Wisconsin-Madison Division of Extension provides equal opportunities in employment and programming, including Title VI, Title IX, and the Americans with Disabilities (ADA) requirements. Please make requests for reasonable accommodations to ensure equal access to educational programs by calling 920-294-4035.

Five County 4-H Summer Camp June 11-14

If you are new and not familiar with what camp means, Green Lake County 4-H teams up with the surrounding counties in our area which include Adams, Marquette, Juneau, and Waushara to offer a high-energy 4-H summer camp program for youth campers in grades 3-8. During this overnight experience campers grade 3-6 grade sleep in cabins and campers grade 7-8 sleep in tents. Our goals in offering this experience are to expand youth members' knowledge on topics such as, but not limited to; archery, canoeing and water activities, team building, and connection building. 4-H camp is the

first overnight experience in the list of Educational Travel opportunities with Wisconsin 4-H.

While we have loved our time camping at Upham Woods in Wisconsin Dells, we are excited to share that 4-H camp will be held at a new camp location in 2023 and held for an additional day! Camp will be held at Camp Lakotah in Wautoma in 2023. A lot of thought and discussion went into this location change with the priority of offering the best, high quality camp experience possible for campers! Campers save the dates of June 11-14, 2023 for your 4-H summer camp experience! Camper registration will be coming soon!

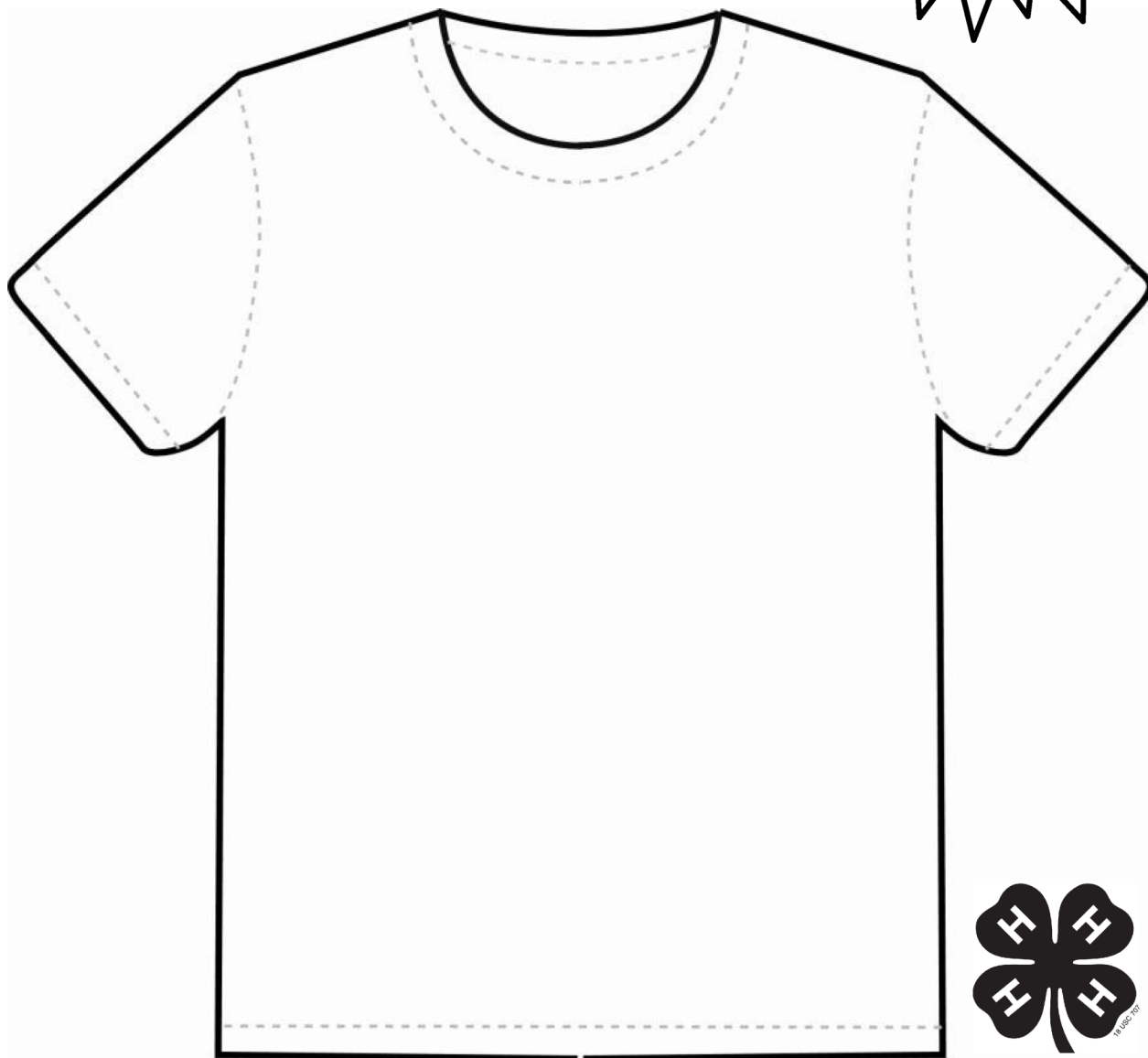
#wi4hmovement



Name: _____
 4-H Club: _____
 County: _____
 Email: _____

T-shirt Design

- Design must include the Official 4-H Clover
- Design must only be on the front and one color
- Please do not use your club/county name on the design as we want the design to represent all of Wisconsin 4-H.
- Have fun and be creative!
- Use this form, or any blank sheet of paper/file
- Submit to: <https://go.wisc.edu/75ts32>



Designs must uphold the values of Wisconsin 4-H. By submitting a design, you agree for it to be used on social media and for promotional and educational purposes.

Designs may need to be edited to be used.

An EEO/AA employer, University of Wisconsin-Madison Division of Extension provides equal opportunities in employment and programming, including Title VI, Title IX, the Americans with Disabilities Act (ADA) and Section 504 of the Rehabilitation Act requirements. For communicative accommodations in languages other than English, please contact oaic@extension.wisc.edu.
 Para pedir adecuaciones para la comunicación en un idioma distinto al inglés, favor de comunicarse con: oaic@extension.wisc.edu.
 Rau kev sib tham pab cuam rau qhov lwv yam lus ntawm lus As Kiv (English), thov sau ntawv rau: oaic@extension.wisc.edu.

4-H OPPORTUNITIES

Equine Vet Drive Through Clinic— April 29th from 9:00am-12:00pm

This is hosted by Marquette County Hoof Beats 4-H Club & Fox Woods Equine Veterinary, Dr. Jennifer Thompson at the Marquette County Fairgrounds in Westfield, WI. This event is open to the public.

Shots & Coggins
6 way shot: \$87.50
Coggins: \$42.00
Rabies: \$22.75
Strangles \$50 will be offered.

A \$15 office fee per owner not horse (i.e owner is person listed on Coggins.) 1 owner can have 3 horses and owners name in Coggins and it's \$15.

Global Reach 4-H Project Discovery

Want to join a global student event from your home computer!? A ticket to this event will propel you into an international arena! Dial in to learn about different cultures, countries and languages while representing our US culture to other participating countries!

On March 21, Zoom in to have the chance to discuss how our US culture is different from (and also similar to!) the cultures of 2 to 3 international students. Register to attend: <https://go.wisc.edu/66h62v>

Wisconsin Dairy Goat Association Share-A-Kid Applications due April 1

Each year, the Wisconsin Dairy Goat Association promotes interest in dairy goats in our state. One of the ways we encourage our young people in this aspect of agriculture is through our Share-a-Kid Program. We award an average of 4 to 6 dairy goat kids to young people across the state each year.

This is a competitive statewide contest. The youth applicant will write an essay of 100 words or more about why they would like to have a dairy goat, how they are going to take care of her (food, shelter, and medical care), and if they have ever raised a goat. We also want to know why they want to raise a goat and what they love about goats. If the youth is new to raising goats, please include who your mentor is. This is a very competitive contest, and we want you to put a lot of effort into your essay. Spelling and



content count. The essay can include drawings, photos, or anything special things that you would like to include. Please keep a copy of your essay because no essays will be returned. If you are selected as a winner of a kid, your essay will be given to the donor. While we make every attempt to award winners one of their breeds of choice, if those breeds are not available, the Wisconsin Dairy Goat Association reserves the right to offer another breed to the winner. Share-a-Kid winners are not required to give a doe kid back to the program, but we encourage them to do so. Scholarship application and information is located online at <http://bit.ly/3VYU5ez>

The deadline to submit your application/essay is by no later than April 1, 2023. All applicants will be notified of results by no later than May 1st, 2023. If you have any questions on this process, please contact Share-a-Kid Chair Andrew Puetz @ ANDREW.PUETZ@GMAIL.COM

WI 4-H State Livestock and Skill-a-thon Contest Contests- Register by March 10 in 4HOnline

What are the contests? These are two different contests all about livestock where you can use your knowledge about the animal species (beef, sheep, swine, meat goat) and the industry.



Livestock Bowl is a quiz competition where all the questions are about beef, sheep, swine, and meat goat topics. Students use a buzzer to answer the questions by giving oral answers to questions posed by a moderator. Similar to the game show Jeopardy. Each match has both an individual and toss-up question round. Teams compete in a double elimination format. The top team earns the opportunity to compete at the national competition.

Livestock Skill-a-thon: Everything you know about raising your animal adds up to so much knowledge of the species and the industry. The Skill-a-thon contest will help you challenge you to share that information through a written quiz and learning stations such as breed identification, feed identification, equipment identification as well as some team activities such as demonstrating evaluation skills. There are both individual and team stations. The top team earns the opportunity to compete at the national

Continued on page 7

4-H OPPORTUNITIES

competition.

Who can participate? Any current 4-H members grades 3-13. Please note, there are age divisions for each of those contests and parameters for grade 13 members. Please see the contest information in the link below for more information on the age divisions. Even if your county has not participated in the past, round-up some 4-H friends and take advantage of this fun opportunity to show your knowledge of the animal species and industry.

Looking for more information, where to register, or resources to study from? <https://4h.extension.wisc.edu/opportunities/statewide-events-and-opportunities/livestock-quiz-bowl-skillathon-contest/>



Livestock Learning Opportunity- Prepare2Respond (P2R)

Prepare 2 Respond (P2R) is a USDA funded grant project that is free and a great way for youth to understand animal disease responses at local events.

This is a learner-engaged program designed to empower exposition employees, volunteers & first responders by building awareness of biosecurity and disease mitigation, resulting in a more rapid response and reduced impact. The goal of this program is to allow all sectors of the local fair to engage staff and volunteers on how to respond to an animal emergency at your fair.

There are 3 short modules, Introduction, First Responder and Livestock Event Personnel, that all staff, volunteers and first responders of fairs and should review and adopt the principles.

Website: <https://prepare2respondprogram.org/>, create an account, register and begin.

WI Youth Livestock Program Presents Educational Programming

This series is offered in connection with the University of Wisconsin Madison Animal & Dairy Sciences Department, College of Agricultural and Life Sciences, and Division of Extension.

April 3 at 7:00 pm focuses on Reproductive Technologies in Agriculture with speaker Dr. Nate Dorshorst, GenOvations. Registration to attend: <https://livestock.extension.wisc.edu/articles/animalsciences->

[education-series/](#)

Archived webinars can be viewed online at <https://www.youtube.com/@WisconsinYouthLivestockProgram/videos> including:

- Beef Live/Carcass Evaluation & Cookery with speakers Ron Russell and Bernie O'Rourke
- Pork and Lamb Evaluation/Carcass Video
- Animal Health & Welfare with speaker Dr. Sarah Adcock, UW Madison Animal & Dairy Sciences Department

Meat Science Animal Biologics Discovery Building Tour, UW Madison Campus- April 29

The Meat Science & Animal Biologics Discovery Building (MSABD) will host group tours of the facility on April 29th. You must email Bernie O'Rourke, borourke2@wisc.edu, to coordinate your trip to campus; no walk-ins will be accepted. The deadline for sign-up is April 26. She will coordinate the groups related to times available and group sizes. Participants will see the new building and learn more about aspects of meat and food science. A small fee for frocks, hairnets, and booties will be assessed per participant.



Wildlife & Woods Virtual Series

Mark your calendars for 7:00pm on March 22, April 26, and May 24. Outdoor enthusiasts connect with other 4-H youth of all ages from around the state. Together, we explore the natural world with a special focus on wildlife, wildlife habitats, and trees. Participants learn about wild places across the United States following the 4-H Wildlife Habitat Education Program (WHEP) and the 4-H Forestry Program. Materials are designed for all ages and knowledge levels, so everyone can benefit. Since the sessions are co-presenter by youth and adult leaders, the youth leadership opportunities are plentiful.

Register to attend in your 4HOnline account under "Events".

4-H OPPORTUNITIES

Summer Academy June 19-22

Wisconsin 4-H and UW-Madison Extension are excited to announce a new student opportunity: the Summer Academy!

This program is open to any 4-Hers in grades 7-10 and will be held from June 19-22, 2023 on the UW-Madison campus. Students will be able to experience life in a residence hall, with the chance to build lifelong friendships with other students from across Wisconsin.

The theme of the inaugural Summer Academy is "Exploring Your WHY," with the goal of providing students the resources to discover pathways to their futures. There will be chances to learn about higher education from UW-Madison and Madison College, as well as career discovery and networking opportunities.

Students will be able to choose from 7 SPARK tracks to learn what it takes to have a career or hobby in a field that fits them the best. These tracks are:

- Arts & Communication
- Leadership & Civic Engagement
- Agriculture & Animal Science
- STEM (Science, Technology, Engineering, and Math)
- Human Services (Head, Heart, Hands, and Health)
- Construction & Trades
- Hospitality Management & Culinary Science

During the event, there will also be fun activities and entertainment from the Wisconsin 4-H Leadership Council, the Wisconsin 4-H Drama Company, and more!

Registration opens in April, keep an eye on this page (<https://4h.extension.wisc.edu/opportunities/statewide-events-and-opportunities/summer-academy/>) for more information to come! We can't wait to see 4-Hers from all of your counties this June!

Summer Academy Adult Advisor Application- Due March 15

4-H Volunteers are invited to apply to be Summer Academy Adult Advisors now through March 15th. Adult advisors will help create a safe, welcoming environment for our youth during Summer Academy, June 19-22 on the UW-Madison Campus.

These volunteers will have the opportunity to fill several key roles during our week in Madison, including:

Lead Floor Advisor
Dorm Monitor
Theater/Assembly Monitor
Pedestrian Safety
Recreation Supervisor



Online application:

<https://go.wisc.edu/ppw3zx> Contact your 4-H Educator for a paper application.

Trainings, as well as an on-site orientation, are a vital part of being an Adult Advisor for this program. You must attend one session for each of the following trainings to become an Adult Advisor for Summer Academy 2023. Each training will be offered twice via Zoom.

- Training 1: Tuesday, April 11, 6:30-8:00 p.m. or Sunday, April 16, 6:30-8:00 p.m. – Roles & Responsibilities of Adult Advisors (Required for ALL)
- Training 2: Tuesday April 25, 6:30-8:00 p.m. or Sunday, April 30, 6:30-8:00 p.m. – Risk Management & Policies (Required for ALL)
- Training 3: Tuesday, May 16, 6:30-8:00 p.m. or Sunday, May 21, 6:30-8:00 p.m. – Updates, Highlights & Final Preparation (Required for ALL)

WI 4-H Foundation Educational Experiences Scholarships

Application online:

<https://4h.extension.wisc.edu/opportunities/statewide-events-and-opportunities/statewide-scholarships/>

Each year, the Wisconsin 4-H Foundation provides a sum of money to the State 4-H Office for needs-based scholarships for youth to participate in statewide Educational Experiences. Wisconsin 4-H believes that cost should not be a barrier to program participation. Youth can apply for a scholarship by submitting their information at the Qualtrics form linked below. The responses to this form will remain confidential and will only be shared with a small committee that will be managing the scholarship funds.

Each youth should submit one form per program they are participating in. Staff will do their best to assess each request and make a determination on the amount awarded when the scholarships are reviewed.

This scholarship fund is available to any youth who is attending one of our Statewide Educational Experiences. Examples of these experiences are:

- Advanced Space Academy
- Animal Science Programming (AASD, Quiz Bowl, Skillathon, Judging Contests)
- Arts Camp or ArtBEAT!
- Citizenship Washington Focus (CWF)
- Fall Forum
- National 4-H Congress
- National 4-H Conference
- Space Camp
- State Arts Team (Drama Company or Arts)
- Summer Academy
- Other Programs

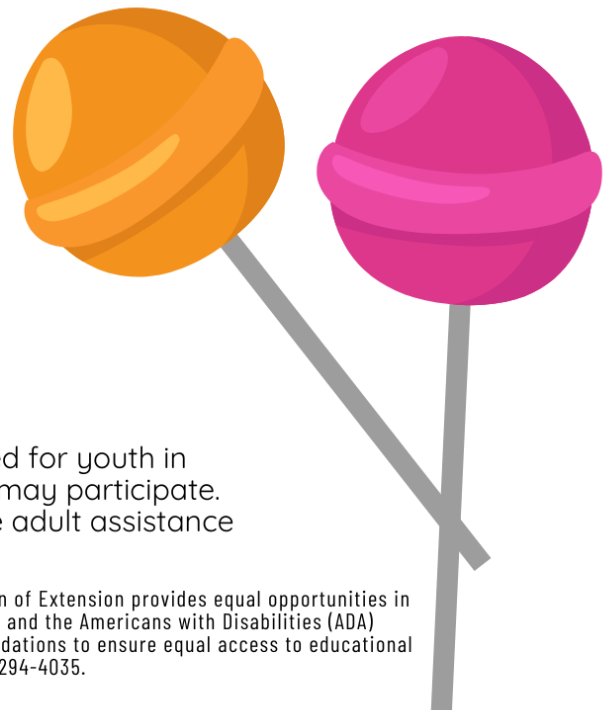


4-H CANDY COMPANY WORKSHOP

TUESDAY, APRIL 25, 2023 AT 5:30PM
TRAINING ROOM, GLC GOV. CENTER

EXPLORING FOOD SCIENCE HAS NEVER BEEN
MORE FUN AS WE FORM OUR OWN CANDY
COMPANY FOR THE EVENING! JOIN AS WE
EXPLORE THE IMPORTANCE OF FOOD SAFETY,
HOW TO MAKE CANDY SUCKERS, AND WORKING
TOGETHER TO CREATE A COMPANY NAME AND
LOGO!

**Sign up to attend by April 18 at
wi.4honline.com
Sign in and click on events!**



This program is designed for youth in
grades 4-8, but any youth may participate.
Younger youth may require adult assistance



UW-MADISON EXTENSION
GREEN LAKE COUNTY

An EEO/AA employer, University of Wisconsin-Madison Division of Extension provides equal opportunities in employment and programming, including Title VI, Title IX, and the Americans with Disabilities (ADA) requirements. Please make requests for reasonable accommodations to ensure equal access to educational programs by calling 920-294-4035.



For the rural community and
those who serve them

LEARN HOW TO SUPPORT YOUR FRIENDS, FAMILY AND NEIGHBORS

Mental Health First Aid (MHFA) teaches you how to identify, understand and respond to signs of mental health and substance use challenges among adults

You'll build skills and confidence you need to reach out and provide initial support to those who are struggling. You'll also learn how to help connect them to appropriate support.

AFTER THE COURSE, YOU'LL BE ABLE TO:

- Recognize common signs and symptoms of mental health challenges
- Recognize common signs and symptoms of substance use challenges.
- Understand how to interact with a person in crisis
- Know how to connect a person with help
- Use self-care tools and techniques.

Sign up for a **FREE Adult Mental Health First Aid Training** at
<https://wirose.wisc.edu>

UPCOMING VIRTUAL TRAININGS:

First Aiders will complete a 2-hour, self-paced online class, and then participate in a 6.5-hour, Instructor-led Zoom Meeting. Limited to 30 adults.

Please contact jenniferpark@wisc.edu for questions

All trainings start at 9am and end at 3:30 PM

- [Jan 31, 2023](#)
- [Feb 24, 2023](#)
- [Feb 27, 2023](#)
- [March 22, 2023](#)



Extension
UNIVERSITY OF WISCONSIN-MADISON

Trainings are offered through the Wisconsin Rural Opioid and Stimulant Engagement (WiROSE), funded by SAMHSA to address opioid and stimulant prevention, intervention, and recovery. WiROSE is a project of the Extension Health and Well-being Institute. An EEO/AA employer, University of Wisconsin-Madison Division of Extension provides equal opportunities in employment and programming, including Title VI, Title IX, the Americans with Disabilities Act (ADA) and Section 504 of the Rehabilitation Act requirements



YOUTH MENTAL HEALTH FIRST AID

for the rural community and
those who serve them

LEARN HOW TO SUPPORT THE YOUNG PEOPLE IN YOUR LIFE

Youth Mental Health First Aid teaches you how to identify, understand and respond to signs of mental health and substance use challenges among adolescents ages 12-18. You'll build skills and confidence you need to reach out and provide initial support to young people who are struggling. You'll also learn how to help connect them to appropriate support.

AFTER THE COURSE, YOU'LL BE ABLE TO:

- Recognize common signs and symptoms of mental health challenges, including anxiety, depression, eating disorders and attention deficit hyperactive disorder (ADHD).
- Recognize common signs and symptoms of substance use challenges.
- Understand how to interact with a young person in crisis.
- Know how to connect a young person with help.
- Better understand trauma, substance use, self-care and the impact of social media and bullying

Sign up for a FREE Youth Mental Health First Aid Training at
<https://wirose.wisc.edu>

UPCOMING VIRTUAL TRAININGS:

First Aiders will complete a 2-hour, self-paced online class, and then participate in an instructor-led Zoom Meeting. Limited to 30 adults.

Please contact jenniferpark@wisc.edu for questions

All trainings start at 9:30am and end at 3:30 PM

- [Jan 24, 2023](#)
- [Feb 3, 2023](#)
- [March 7, 2023](#)
- [March 16, 2023](#)



Extension
UNIVERSITY OF WISCONSIN-MADISON

Trainings are offered through the Wisconsin Rural Opioid and Stimulant Engagement (WiROSE), funded by SAMHSA to address opioid and stimulant prevention, intervention, and recovery.

WiROSE is a project of the Extension Health and Well-being Institute.

An EEO/AA employer, University of Wisconsin-Madison Division of Extension provides equal opportunities in employment and programming, including Title VI, Title IX, the Americans with Disabilities Act (ADA) and Section 504 of the Rehabilitation Act requirements



2023 Wildlife & Forestry 4-H Art Contest Registration

(Wildlife & Forestry contests are on a separate registration form.)

Friday, March 31, 2023 and Saturday, April 1, 2023

Washington County Fair Park, 3000 Hwy. PV, West Bend, WI (Hwy 45 S. of West Bend)



This 4-H activity is open to all Wisconsin 4-H Club members. You may be enrolled in any 4-H project to participate in Wildlife WHEP Wisconsin 4-H & Wisconsin 4-H Forestry activities. See additional guidelines and wildlife/forestry art contest rules for all classes.

"Brief Description" – All items must have a 3" X 5" card attached explaining your wildlife item and its wildlife connection on one side and your name, club, and county on the other side. See examples in guidelines on page two. Items must be made in the current 4-H project year and after September 1st of the previous year. No face to face judging. Judges will give SIX awards in each class and in each division. TAKE UP TO FOUR ITEMS.

Check your Grade: K-5 – 2nd grade ____ 3rd – 6th grade ____ 7th – 9th grade ____ 10th – 13th grade ____

Check the box with your choice of entries – 4 ENTRIES TOTAL

- ☐ **1-Nesting Structure or Feeder for Bird, Bee, Butterfly, or Bat House, etc.** — The structure meets specific requirements for the named critter. Include - overall size, shape, and hole diameter or opening, etc. (Ornamental bird houses, etc. must be entered in crafts.) Include your story telling description.
- ☐ **2-Craft** — Craft item has wildlife or forestry connection. Examples: leather craft, stitchery, clothing, sculpture, wildlife folk art, plaster tracks, quiver, etc. Craft items must be made by exhibitor during the current 4-H year. (Do not use "put together craft kits" or similar items.)
- ☐ **3-Drawing** — Drawing can be any size and does not need to be mounted that has a wildlife, forestry, or wildlife habitat connection. Drawing can be pencil, ink, charcoal, chalk, pastel, colored pencil or similar on any surface. Drawing will be judged on "story telling ability", neatness, and your description.
- ☐ **4-Invasive Plant or Weed** — Poster, display, or dried example of an invasive plant or weed (immature and mature if possible). Include item name, your description, and control measures. Also, include date & location where found for each item for actual collections. This entry may include items from the entire preceding calendar year. Examples: purple loosestrife, ragweed, etc. Include your story telling description.
- ☐ **5-Orienteering & Geocaching** — Poster or display on Compass, GPS, or Topographic Map Use. Items will be judged on their relationship to wildlife or forestry applications. Poster or display related to geocaching. Include your story telling description.
- ☐ **6-Painting** — Your painting can be any size and does not need to be mounted that has a wildlife or forestry connection. Painting can be acrylic, watercolor, oil, or similar on any surface. Painting will be judged on "story telling ability", neatness and your description.
- ☐ **7-Photo Black & White** — Your black & white photo or silhouette photo (one photo only) can be any size and does not need to be mounted that has a wildlife or forestry connection. Photo will be judged on "story telling ability", neatness, and your description. No people allowed.
- ☐ **8-Photo Color** — Your color photo (one only), any size, and does not need to be mounted that has a wildlife or forestry connection. Photo will be judged on "story telling ability", neatness, and your brief description. No people allowed.
- ☐ **9-Recycle** — Any item related to wildlife, forestry, or for wildlife use. Example – bird nesting material. Item will be judged on "story telling ability", practical usefulness, neatness, and your brief description.
- ☐ **10-Taxidermy** — Item or display made 4-H member during the current 4-H year. Include date, location, and county where critter was obtained. Also, include a description of the critter and of your taxidermy work.
- ☐ **11-Trail Camera Photo – Large / Small Mammal** — Photo from a trail camera can be any size and does not need to be mounted. Include animal name, date, location (county), and brief description of the picture. Also include the relationship of the camera's owner. Picture must have been taken with your immediate family or grandparents trail camera after September 1st of the previous year. Photos will be judged on "story telling ability", neatness, and your description.
- ☐ **12-Trail Camera Photo – Upland Bird, Backyard Bird, Waterfowl, or Raptor** — Photo from a trail camera can be any size and does not need to be mounted. Include animal name, date, location (county), and brief description of the picture. Also include the relationship of the camera's owner. Picture must have been taken with your immediate family or grandparents trail camera after September 1st of the previous year. Photos will be judged on "story telling ability", neatness, and your description.
- ☐ **13-Tree or Shrub** — Item, poster or display of a tree or shrub, parts, measurements, related insects or diseases, etc. Include the tree/shrub name and description. Also, can be with an animal, insect, bird, or critter that makes their home in, on, or near a particular tree or shrub species. This entry may include items from the entire preceding calendar year.
- ☐ **14-WHEP or Forestry Concept** — Item, diorama, poster, or display of a WHEP or forestry Concept (or part of a concept) from the current national manuals. Include the concept name and a description. Examples: habitat requirements, stages, food chain, etc.
- ☐ **15-WHEP Foods** — Item, diorama, poster, or display of a WHEP foods (or part of a food group) from the current national WHEP manual. Include the food group name and a description. Examples: aquatic plants, grains, soft mast, hard mast, etc.
- ☐ **16-WHEP or Forestry Management Practice** — Item, diorama, poster, or display of a WHEP Management Practice (or part of a management practice) from the current national WHEP Manual. Include management practice name and your description. Examples: planting trees, fish or wildlife survey, create snags, wildlife damage management, recreational uses, products, tools used, etc.
- ☐ **17-Wildflower** — Dried or pressed wildflowers, poster or display of wildflowers or parts of a wildflower. Include name, date, location (county) where found and your description. This entry may include items from the entire preceding calendar year.
- ☐ **18-Wildlife or Forestry Game** — Individual or group game or learning activity related to wildlife or forestry. Include name of game, supplies, rules, and ages for participation. Also, briefly describe what will be learned by the participants. Include a picture of the game being used if possible. Your item can be a 4-H youth leader activity from the entire preceding year

WILDLIFE & FORESTRY ART CONTEST ENTRY FEES:**Youth entered in wildlife/forestry art contest only (Includes t-shirt)**

___ \$10.00 First item; ___ \$2.00 second item; ___ \$2.00 third item ___ \$2.00 fourth item

Youth entered in Tri County Tournament and Art Contest ___ \$2.00 First item; ___ \$2.00 second item; ___ \$2.00 third item ___ \$2.00 fourth item

Can't Attend the Wildlife & Forestry Art Contest. Please make arrangements with a friend to bring your item and take it along home after the event. If that is not possible, please mail/ship your entry in an "acceptable, returnable, and reusable packaging". Your item will be return shipped after the contest. We are not responsible for lost or damaged shipments. Please include the proper applicable shipping cost for the return shipment (nearest dollar value) with your registration fee. See your local Post Office or UPS Store for applicable shipping rates. Your General Club Leader or Extension Youth Development Educator or Project Leader must acknowledge that your entry is your work and that it was made during the current 4-H project year. Contact us with questions.

Wildlife WHEP Wisconsin 4-H Art Contest Rules

- Only North American wildlife (including migratory critters), plants, etc., especially those in found in Wisconsin can be used.
- Items must be made in the current 4-H project year and after September 1st of the previous year. (See listed exceptions.)
- All 4-H wildlife artwork must be done by the participant and not previously exhibited at a Wildlife WHEP Wisconsin 4-H Art Contest.
- Mountings or frames on photos, drawings, and paintings are not required. Items will be judged on their "story telling ability", neatness, and your brief description.
- Diorama, displays, pictures, and posters can be any reasonable size as long as it is easy to handle and display.
- **"Brief Description" – All items must have a 3" X 5" card attached with your name, club, & county on one side and description which includes proper name, habitat requirements (diet, water & cover). See examples below.**
- **Your Wildlife or Forestry Description is Required and counts 30% toward an award" – 75 words maximum.**
Your description includes the correct critter name or names. You can include habitat information (diet, water & cover), and other interesting comments that tells the story about your item.
Brief example for "Photo, Drawing, or Painting": (Your picture of deer) so your description is as follows:
"White-tailed Deer - This is a large mammal. Habitat: forest & prairie areas, Foods sources: grass, acorns, browse"
Brief example for "Wildlife WHEP Concept" poster: (Your concept is a food web) so your description is as follows:
"Food Web - A food web is a network of interconnected food chains. A food chain starts with primary producer (example), and next is primary consumer (example). Next is secondary consumer (example) and tertiary consumer (example) follows next".
- Youth are limited to **one entry in a class for your age and four entries total.**
- **Your division is determined by your birthday as the first day of the event.**
- Make sure your project will withstand being handled. Projects will be on display for others to view and to examine.
- **No face to face judging. Judges will give SIX awards (and honorable mention as determined) in each class and in each division.**
- Any entry not meeting all contest rules will not be eligible for an award.
- Items are entered on Friday evening or Saturday morning. **Items must be registered and on display by 10:00 A.M. Saturday. Late items will not be judged. Items are on display until 1:00 P.M. Please make arrangements for pick-up of your entries if you leave early.**
- +++ An incomplete registration form will not be accepted. +++

I acknowledge that this youth is currently enrolled in 4-H and is entered in the correct classes.

General Club Leader or Extension Youth Development Educator or Adult 4-H Project Leader (project _____) acknowledgment.

Signature _____ Ph# _____ Project Leader for _____

Tri-County Wildlife Habitat Competition: Friday night and Saturday to 1:00PM. **Separate age classes: K-5, 6-7, 8-9, 10, 11, 12, 13, 14, 15, 16, 17-19.** Different tests will be used in various age divisions. There are 40 multiple choice questions. **No fee required and you are automatically entered.** See the wildlife team entry form for details. (This contest is not the Wildlife WHEP & Forestry Statewide Competition. See the separate registration form.)

I'm entered on a tournament wildlife team. Team Name: _____

See Wildlife WHEP Wisconsin 4-H website for details on wildlife contest topics: <https://4h.extension.wisc.edu/opportunities/projects/outdoor-education>.See 4-H Shooting Sports website for more details on wildlife contest topics: <https://4h.extension.wisc.edu/opportunities/projects/shooting-sports/>.

Each PARTICIPANT receives only one Tournament T-Shirt. Adult sizes: Small ___ Medium ___ Large ___ X Large ___ XX L ___

REGISTRATION DEADLINE: Postmarked Saturday, March 11, 2023. Faxed entry forms must be received before midnight that day with payment and original registration received here by March 15, 2023. No late entries accepted.

Name _____ Birth Date _____ Age _____ Phone _____

Address _____ City, State, Zip _____

4-H Club _____ County _____ E-mail _____

Program support is provided by Wisconsin Wild Turkey Federation Chapters, Northern Kettle Moraine Whitetails Unlimited, Friends of Wildlife WHEP Wisconsin 4-H, and Friends of Wisconsin 4-H Forestry. THANK YOU.

Permission Statement: I grant permission for my child to participate in the Wildlife WHEP Wisconsin 4-H Wildlife & Wisconsin 4-H Forestry Art Contest and related activities. I release the hosting facility, their employees, UW Extension employees, volunteers, and donors from any financial responsibility while participating or in attendance. I agree to pay all expenses not covered by insurance. I authorize the use of photographs of our family at this event for educational or media purposes. **I have read and understand the contest rules regarding participation.**

Signature: Parent/Guardian _____ Date _____ Participant's Signature: _____

Total fees: _____ Check Number _____ Make checks payable to: Washington County 4-H Shooting Sports

Mail to: Barb/Norb Yogerst, 2401 Western Avenue, Jackson, WI 53037 PH: 262-677-2379

EM: washingtonco4hshootingports@gmail.com**Please return this form with payment. Keep a copy for your records. Copy as needed.**

WWW4Hart/20220831



Extension

UNIVERSITY OF WISCONSIN-MADISON
GREEN LAKE COUNTY

571 County Road A
Green Lake, WI 54941
Phone: 920-294-4032
(24-Hour Voicemail)
Fax: 920-294-4176
TTY: 711 Wisconsin Relay
Office Hours: 8:00 a.m.-4:30 p.m.
Located in the Green Lake County Government
Center building, 2nd floor, west wing.
Website: greenlake.extension.wisc.edu

AN EQUAL OPPORTUNITY EMPLOYER

May/June 2023 Newsletter Deadline

DEADLINE:
Newsletter Articles

Have club meeting minutes, 4-H pictures, stories, how your club is giving back to the community, or anything your club/group would like to share with Green Lake County 4-H? Submit them by April 13 at 4:30 p.m. to be included in the May/June 4-H Newsletter! We would love to share what your club/group is up to!

Green Lake County Extension & Fair Office Staff

Pat Wagner

Area 14 Extension Director
pat.wagner@wisc.edu

Morgan Martinez

4-H Program Educator
morgan.martinez@wisc.edu

Kathy Ninneman

Fair & Office Coordinator
kathy.ninneman@wisc.edu

Vacant

Human Development & Relationships Educator

Natasha Paris

Regional Crops Educator
natasha.paris@wisc.edu



Green Lake County Agriculture/Extension Education & Fair Committee

Ken Bates, District 5; **Nancy Hiestand**, District 8; **Nita Krenz**, District 15;
Don Lenz, District 13; **Nancy Hoffmann**, District 1; Alternate, **Curt Talma**, District 3



An EEO/AA employer, University of Wisconsin-Madison Division of Extension provides equal opportunities in employment and programming, including Title VI, Title IX, and the Americans with Disabilities (ADA) requirements. Please make requests for reasonable accommodations to ensure equal access to educational programs as early as possible preceding the scheduled program, service or activity.



UW-MADISON EXTENSION
GREEN LAKE COUNTY

