



# GREEN LAKE COUNTY 4-H PROGRAM GUIDE

## 2022-2023



**Extension**

UNIVERSITY OF WISCONSIN-MADISON  
GREEN LAKE COUNTY



*An EEO/AA employer, University of Wisconsin-Madison Division of Extension provides equal opportunities in employment and programming, including Title VI, Title IX, the Americans with Disabilities Act (ADA) and Section 504 of the Rehabilitation Act requirements.*

|   |       |
|---|-------|
| Welcome Letter.....                         | 1     |
| What is 4-H.....                            | 2     |
| Who's Who in 4-H .....                      | 4-5   |
| 4-H Emblems and Symbols.....                | 6     |
| 4-H Enrollment.....                         | 7     |
| Green Lake County 4-H Clubs .....           | 8     |
| 4-H Projects .....                          | 9-14  |
| How Does Learning in 4-H Happen.....        | 15    |
| 4-H Opportunities.....                      | 16-18 |
| 4-H Youth Development Code of Conduct ..... | 19    |
| 4-H Terms.....                              | 20-21 |
| Green Lake County's Extension Office.....   | 22    |

## ***Questions? Contact the Extension Office!***

### **Morgan Martinez**

4-H Program Educator

Email: [morgan.martinez@wisc.edu](mailto:morgan.martinez@wisc.edu)

### **Kathy Ninneman**

Fair & Extension Office Coordinator

Email: [kathy.ninneman@wisc.edu](mailto:kathy.ninneman@wisc.edu)

Phone: (920) 294-4032

Website: [www.glc4h.org](http://www.glc4h.org)

## ***How to Join***

1. Review the Green Lake County 4-H Program Guide. Reach out to 4-H Program Educator with any questions.
2. Select a club that works for your family.
3. Select the project(s) that you are interested in for the year.
4. Enroll at [www.wi.4honline.com](http://www.wi.4honline.com)
5. Club dues vary from club to club, so please contact the general leader for their specific amount. Typically they range in \$5-\$10 per member/year. If your family is experiencing financial hardship, speak with your club leader about 4-H sponsorships for these dues.
6. Watch your e-mail and mail for important 4-H happenings!



**Extension**

UNIVERSITY OF WISCONSIN-MADISON  
GREEN LAKE COUNTY

## **Green Lake County Extension**

571 County Road A

Green Lake, WI 54941

Phone: 920-294-4032 Fax: 920-294-4176

Website: glc4h.org

September 2022

Dear Green Lake County 4-H Family:

First of all, thanks for your interest in the Green Lake County 4-H program. In 4-H, young people share, grow, and learn together from various projects, events, and activities in informal situations under the guidance of their families and other volunteer adult leaders. Regardless of the structure, 4-H members have fun learning, working, and succeeding together in the home, neighborhood, and community.

Most 4-H members join one of our local 4-H clubs. Clubs typically hold monthly meetings plus many other events throughout the year including: parties, picnics, outings, community service opportunities, and much more! Members interested in being more involved can become club officers where they have the responsibility of planning events and programs. In addition to club meetings, 4-H members can also enroll in a variety of projects. Projects include arts & crafts, horse, fishing, foods, rocketry, woodworking and many others. Projects are lead at the club level, county-wide level or through independent study.

The 4-H Slogan, "Learning by Doing," illustrates the fact that 4-H focuses on teaching life skills through hands-on experiences and activities. These skills include the tangible, such as sewing, cake decorating, fishing, dog obedience, or raising a beef steer, which members learn through project work. Life skills, however, also encompass the more abstract abilities such as leadership, communication, teamwork, and cooperation. Members learn these through participation in their club, with project teams, or through county, state, national, or even international opportunities.

I look forward to working with you!

Morgan Martinez  
4-H Program Educator



# What is 4-H

4-H is a positive youth development organization that empowers young people to reach their full potential. A vast community of more than 6 million youth and adults working together for positive change, 4-H enables America's youth to emerge as leaders through hands-on learning, research-based 4-H youth programs and adult mentorship, in order to give back to their local communities.

4-H is delivered by Cooperative Extension—a community of more than 100 public universities across the nation that provides experiences where young people learn by doing. For more than 100 years, 4-H has welcomed young people of all beliefs and backgrounds, giving kids a voice to express who they are and how they make their lives and communities better. Through life-changing 4-H programs, nearly six million kids have taken on critical societal issues, such as addressing community health inequities, engaging in civil discourse and advocating for equity and inclusion for all.

In 4-H, kids complete hands-on projects in areas like health, science, agriculture and civic engagement in a positive environment where they receive guidance from adult mentors and are encouraged to take on proactive leadership roles. Kids experience 4-H in every county and parish in the country through in-school and after-school programs, school and community clubs and 4-H camps.

4-H's reach and depth are unmatched, reaching kids in every corner of America – from urban neighborhoods to suburban schoolyards to rural farming communities. Our network of 500,000 volunteers and 3,500 4-H professionals provides caring and supportive mentoring to all 6 million 4-H'ers, helping them grow into true leaders today and in life.

## What Do You Do in 4-H?

The 4-H method is Learn by Doing. Members complete learning experiences called 4-H projects. A project is a subject or area of interest that the 4-H member wants to learn more about. There are more than 40 projects that are supported by project materials, but a member may also choose from other areas.

Young people participate through local 4-H clubs. Clubs are located in schools, military bases, communities, or neighborhoods. Clubs meet on a regular basis. Clubs participate in community service projects, engage in learning opportunities, and take trips to educational places. 4-H'ers learn leadership skills by planning club activities and by being officers in their clubs. Older 4-H members act as youth leaders, assisting adult volunteers with projects and activities for younger members.

4-H members also have the opportunity to attend camps, contests, and conferences at the County, State, and National levels.

The Green Lake County 4-H program provides the opportunity for youth directed involvement (with adult volunteer support) in developing leadership, citizenship, teamwork, and career goals in a positive educational environment.

HEAD  HEART  HANDS  HEALTH

# What is a 4-H Club?

A 4-H club is an educational/learning unit with 5 or more youth from at least three different families managed by one or more club leader. Each member is enrolled in at least one 4-H project. New 4-H clubs must complete a charter when it is organized, which allows the club the full benefits of the 4-H organization. This includes the use of the 4-H name and emblem and the tax-exempt status of 4-H.

The mission of 4-H is to provide meaningful opportunities for all youth and adults to work together to create sustainable community change. This is accomplished within three primary areas – civic engagement and leadership, healthy living, and science. These mission areas reiterate the founding purposes of Extension through agriculture (e.g., community leadership, quality of life, and technology transfer) in the context of 21st century challenges and opportunities.

# What Does a 4-H Club Do?

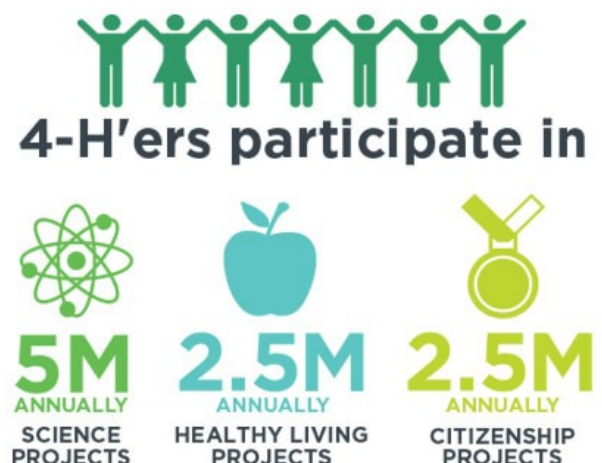
4-H members join together in an organization called a 4-H club. It elects its own officers and conducts its own business. The club has a president, vice president, secretary, treasurer, reporter, and may have other positions such as historian or parliamentarian.

The club has a business meeting once a month with an annual plan for their programs. At this meeting, the group discusses business and makes plans for activities. In addition, each meeting usually includes some kind of special educational program. This could be demonstrations or talks by members, parents or guest speaker.

# A Typical Meeting

A 4-H club meeting lasts about an hour and consists of the following parts:

- Pledge (3 minutes)
  - U.S. pledge to flag
  - 4-H pledge
- Business meeting carried out using parliamentary procedure (15 to 20 minutes)
  - Roll call
  - Reading and approval of minutes
  - Report of standing and special committees
  - Reports of 4-H activities
  - Transaction of old business
  - Transaction of new business
- Program (15 to 20 minutes)
  - Project or activity
  - Demonstration(s)
  - Special program
- Recreation and refreshments (20 to 30 minutes)



# Who's Who In 4-H?



## ◆ Club Level

### **4-H Member**

- Any youth in kindergarten through one year beyond high school graduation, and not to extend beyond the age of 19 as of December 31 of enrollment year
- Attends 4-H Club meetings
- Enrolls in 4-H on 4HOnline

### **4-H Club Leader**

- Provides guidance, leadership, and management for a 4-H Club
- Manages and coordinates monthly club meetings, activities, and organization
- Plans yearly club program/ activities with officers and club members
- Promotes cooperation, coordination, and communication between youth & adults.
- Recruits new leaders/members and informs parents about upcoming events in 4-H.
- Provides recognition for members and leaders.
- Publicizes 4-H in community.
- Keeps records and supplies.

### **4-H Club Officers**

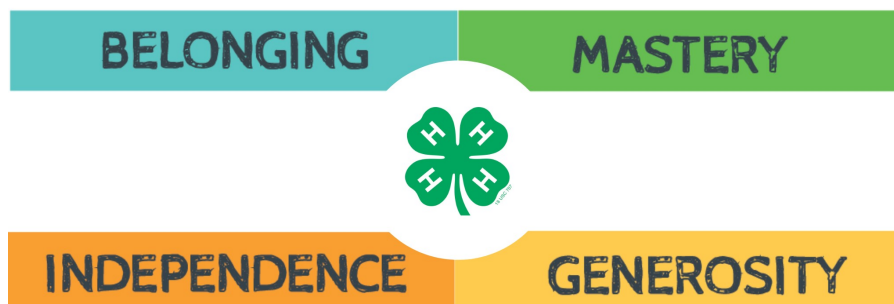
- 4-H youth elected by 4-H Club members each year.
- Plan and conduct Club meetings and activities.
- Work with club leader to form an executive committee to give overall guidance to the club.

### **Project Leaders**

- Organize and conduct project group meetings and activities.
- Help members select and manage projects.
- Assist members with record keeping.

### **Parents/Guardians**

- Parents/guardians are very important to the success a young person will have in the 4-H program and are encouraged to attend 4-H club meetings, project meetings and county-wide events.



## **County Level**

### **4-H Ambassadors**

4-H Ambassadors are a team of 4-H youth in grades six and above who promote the 4-H program. Members must complete applications, which are available at: <https://greenlake.extension.wisc.edu/files/2019/09/Ambassador-Application.pdf>

### **4-H Leaders' Association**

*Green Lake County 4-H Leaders' Association*, is operated exclusively for the purpose of forming an association of leaders and members to encourage leader training, and to supplement and enhance 4-H youth education and development programs at the local, state and national levels. The people elected as President, Vice President, Secretary, Treasurer, Past President, (2) Northern District Reps, and (2) Southern District Reps are the adults leaders on the executive board. The 4-H members also elect two youth to represent them on the county 4-H Leaders' Executive Board.

### **4-H Activity Leader**

A 4-H Activity Leader is a volunteer who is responsible for organizing and conducting activities and service projects.

### **4-H Project / Resource Leader**

A 4-H Project / Resource Leader is a volunteer who helps 4-H members as they learn, make or create something. This person can be a 4-H parent who agrees to help with a project or a person from the community who has knowledge in a particular subject.

## **Adult Volunteer General Information:**

Volunteers are always needed! If you would like to share your talents, give the Green Lake County Extension office a call or talk to your General Leader. No education or experience is necessary, only a willingness to work with youth.

- ⇒ All adults must complete 4-H Volunteer Orientation before they may begin working with youth.
- ⇒ All adult 4-H volunteers must annually complete the 4-H Enrollment Form online.
- ⇒ All adult 4-H volunteers must pass a background check.
- ⇒ If you have any questions or would like more information about 4-H, and how to becoming a 4-H volunteer, please contact the Green Lake County Extension office at 920-294-4032.





# 4-H Emblems and Symbols

## **Emblem:**

The national 4-H emblem is a four-leaf clover with the letter “H” on each leaf.



## **The Four H's:**

The four H's stand for Head, Heart, Hands, and Health. These four H's represent the four-fold training and development in which members participate. This meaning of the four H's is clearly given in the pledge below.

## **Pledge:**

4-H members should learn the national 4-H pledge.

I pledge  
...My **H**ead to clearer thinking  
...My **H**ear to greater loyalty  
...My **H**ands to larger service, and  
...My **H**ealth to better living, for my club,  
my community, my country, and my world.

## **The Colors:**

Green and White are the 4-H colors. The white background of the flag symbolizes purity. The green 4-H emblem is nature's most common color in the great outdoors, and green is also the color of springtime, life, and youth.

## **Slogan:**

“Learning By Doing”

## **Motto:**

The national 4-H motto is: “To Make the Best Better.”

**Vision:** A world in which youth and adults learn, grow, and work together as catalysts for positive change.

**Mission:** 4-H empowers youth to reach their full potential working and learning in partnership with caring adults.

## **Websites**

Green Lake County 4-H: [www.glc4h.org](http://www.glc4h.org)

Wisconsin 4-H website: <https://4h.extension.wisc.edu>

4HOnline website: <https://wi.4honline.com>

National 4-H Council website: <http://www.4-h.org>

National 4-H Supply website: <http://www.shop4-h.org>





# 4-H Enrollment

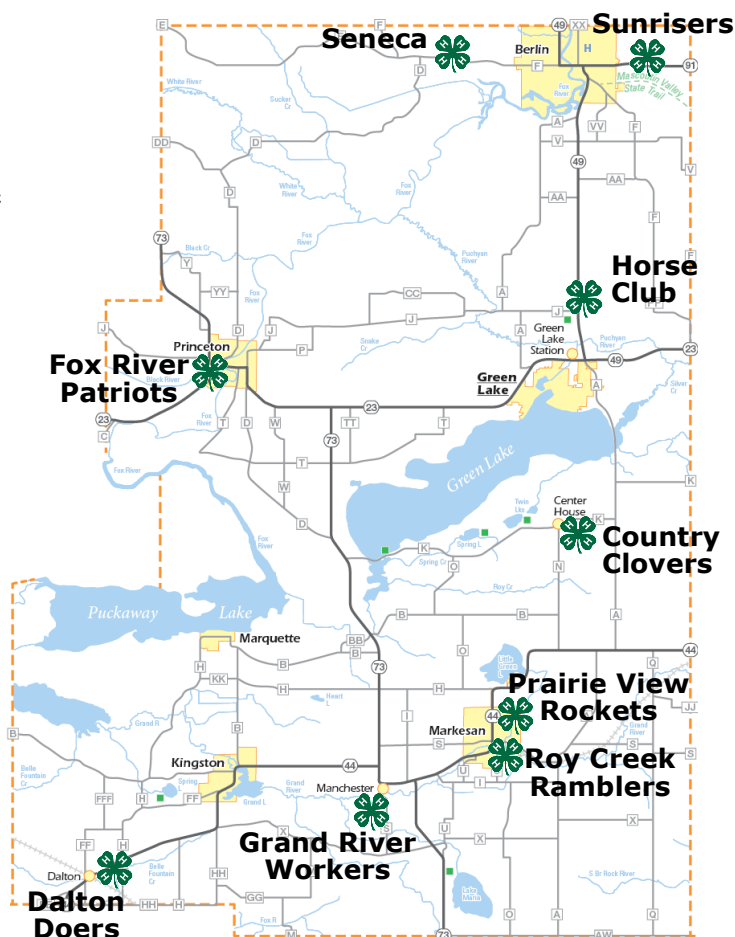
## ◆ Youth - General information:

- 4-H Clubs are encouraged to recruit members year around. Current members are suggested to re-enroll as soon as possible so they continue to receive information.
- Youth may enroll in 4-H at any time during the year. To receive all the benefits of Green Lake County 4-H, new 4-H member enrollment deadline to exhibit as a 4-H member at the Green Lake County Fair is March 1, 2023. Youth who enroll after this date will not be eligible to represent Green Lake County 4-H at the Green Lake County Fair.
- The primary enrollment window is September 1, 2022 to November 1, 2022.
- You can enroll in 4-H at [www.wi.4honline.com](http://www.wi.4honline.com)
- A 4HOnline family enrollment instruction guide providing step-by-step instructions how to use the online enrollment system is available online at <https://4h.extension.wisc.edu/4h-resources/4-h-online-2-0-family-enrollment-guide/>
- A list of all clubs is available at [www.glc4h.org](http://www.glc4h.org)
- 4-H members are to select their 4-H projects at the time of enrollment, but have until March 1st to add or drop projects. 4-H members should be enrolled in a project in order to be eligible to represent 4-H in that project at that year's Green Lake County Fair.
- For the safety of all Green Lake County 4-H members, youth must be enrolled in the project in order to participate in (physically engage or take part in) project functions.
- Youth must meet all project/club requirements to represent Green Lake County 4-H at that year's Green Lake County Fair.
- A 4-H family moving into Green Lake County after the March 1st enrollment deadline may transfer into a Green Lake County 4-H club without losing their eligibility to represent 4-H at the Green Lake County Fair for the current year. To do so, however, they must provide proof of current year 4-H membership and project enrollment in the county from which they came.
- Youth may not hold 4-H membership in more than one county or state at the same time.
- Youth must meet the grade requirements outlined within this document in order to enroll in and participate in project activities and functions.
- **Grade level is determined by grade in school at time of 4-H enrollment.** Youth who are home-schooled should use declared grade. Youth are eligible for membership through the next year following high school graduation. If a youth drops out of school, they will be considered as if they had stayed in school and would complete their 4-H membership as the same time their grade cohort would complete their membership.



# Green Lake County 4-H Clubs

Although youth can join any 4-H club, most people select a club that is close to home. If you have any specific questions or need help with the process, please call the Extension Office, 920-294-4032.



| Name of Club                | Meeting Dates & Locations   | Contact Person(s)             | Email   |
|-----------------------------|---|-------------------------------|---|
| <b>Country Clovers</b>      | 2 <sup>nd</sup> Sunday, 6:30 pm<br>Green Lake Town Hall, N4454 Horner Rd., Markesan                                     | Jacky Berndt                  | berndtfam@centurytel.net                              |
| <b>Dalton Doers</b>         | 2 <sup>nd</sup> Sunday, 3:00 pm<br>Township of Kingston Hall & Senior Center, Dalton                                    | Brenda Oft                    | oftbrenda@gmail.com                                   |
| <b>Fox River Patriots</b>   | 3 <sup>rd</sup> Sunday, 6 pm<br>American Legion Hall, 853 W. Main St., Princeton  | Linda Swanke                  | indaswanke73@gmail.com                                |
| <b>Grand River Workers</b>  | 2 <sup>nd</sup> Wednesday, 7 pm;<br>7:30 pm (June, July & August);<br>Manchester Senior Center, W3234 State Rd. 44 & 73 | Heather Herbst<br>Lisa Reyes  | hcotterill_23_10@hotmail.com<br>reyesla_1@hotmail.com |
| <b>4-H Horse Club</b>       | 1 <sup>st</sup> Monday, 6:30 pm<br>September, November, January, March, May & July                                      | Beth Howman-Combs             | mbcombs@charter.net                                   |
| <b>Prairie View Rockets</b> | 2 <sup>nd</sup> Monday, 6:00 pm<br>Manchester Activity Center (MAC)   | Dan Huitema                   | dieseldan4jc@yahoo.com                                |
| <b>Roy Creek Ramblers</b>   | 2 <sup>nd</sup> Sunday, 7 pm<br>Markesan Elementary School Cafeteria  | Kim Drews<br>Emily Strahota   | kaburk79@gmail.com<br>eschmuhl2015@gmail.com          |
| <b>Seneca</b>               | 2 <sup>nd</sup> Monday, 6:30 pm<br>St. Paul's Lutheran Church, W3166 Cty. Rd. F, Berlin                                 | Donna Petit<br>Christie Galow | dmpetit@centurylink.net<br>christiepearl19@gmail.com  |
| <b>Sunrisers</b>            | 2 <sup>nd</sup> Sunday, 4:00 pm<br>Town of Berlin Town Hall, N9291 Willard Rd, Berlin                                   | Gina Fleegal<br>Tammy Goettl  | gfleegal@berlin.K12.wi.us<br>tlondowski@yahoo.com     |



# 4-H Project

4-H Projects are long-term, educational experiences in an area that you want to learn more about during the year. There are projects on just about any topic you would like to study and explore, from art to woodworking, from computers to rabbits, from clothing to small engines.

The projects listed in this guide are all offered in Green Lake County.

Don't forget to check out the project pages on the WI 4-H Web Site at <https://fyi.extension.wisc.edu/wi4hprojects/> . On these pages, you'll find descriptions for statewide projects, Internet resources and links of interest, county fair exhibit suggestions, state specialist contacts, and other suggested 4-H resources.

And remember, you'll learn more than "subject matter" as you complete your projects. You'll learn many life skills that you'll use every day of your life, such as understanding yourself, communicating better, solving problems, making decisions, and working with others.

4-H members must enroll in at least one project each year. Members in kindergarten, first and second grade may only enroll as Cloverbuds. Starting in third grade, members may enroll in any projects.

Listed on the following pages are the projects you may enroll in as a Green Lake County 4-H member. They are in alphabetical order.



## ***How to Select 4-H Projects***

4-H members, first, make a list of the things you like to do or want to learn more about. Talk over your list with your parents, leaders and friends. They may recognize some special things you are interested in that you didn't even realize were a project opportunity in 4-H.

Then compare your list with the projects described in this guide. Ask yourself if you have the equipment, money and time to do the projects that sound interesting.

If this is your first year in 4-H, concentrate on doing only two or three projects well. Usually you can spend more than one year in a project unit because there are enough ideas there to span two or three years.

If you are a 4-H member re-enrolling, it is recommended to enroll in 5-8 projects.

4-H leaders, if you're a 4-H adult leader, please make certain that you enroll as a leader in the projects you are interested in supporting (i.e. "Dairy: Ldr", "Ceramics: Ldr") and not in the projects themselves.

## ***Factors to consider when selecting projects:***

- What are the member's interests? Many times a member doesn't really know if he or she would like a particular project without first giving it a try so interest may be stimulated.
- What is the member's age and what are the member's abilities?
- How much time does the member have and how much time does the project require? What season of the year does most of the activity occur?
- Are the space and equipment available to the member adequate for the project?
- How much will the project cost?

## ***What Does a Project Cost?***

The costs vary depending upon the project chosen. A member enrolled in the foods and nutrition project might use supplies from around the home to practice the skills being learned. For example a member who buys and raises a horse can expect to invest thousands of dollars. Keep costs in mind as you select your projects.

## ***Are 4-H'ers Expected to do Their Own Project Work?***

Yes, with the guidance of an adult. 4-H is a "learn by doing" program. Adults may show the member how, but members are expected to learn how to do things themselves.

4-H members may conduct some project work in groups. Working in groups can be fun, and the members get the experience of helping each other.

## ***How are Projects Conducted?***

Project learning experiences are conducted through various activities and events such as:

- Regular 4-H club meetings (project talks, demonstrations, etc.)
- Project group meetings
- Tours/field trips to local businesses or entities related to your project
- Family activity at home
- Individual work toward project goals
- Record keeping of project activities

## ***Project Groups***

Members should have the opportunity to participate in group learning and peer teaching since sharing skills and experiences often provides them with greater learning opportunities. Group participation also can motivate members to follow through with commitments. Usually members are involved in group learning through their participation in a project group.

Some project areas will have countywide project meetings or activities held. If a particular project is not offered at your club, you may contact the Extension Office to gather more information on how to start that project in your club and/or participate in the project on your own.

County-wide project groups that are offered in Green Lake County 4-H include: Green Lake County 4-H Horse Club, Green Lake County Livestock Council, Green Lake County 4-H Archery Project, Green Lake County 4-H Ambassadors, and Green Lake County 4-H Dog Project.



## K-2 GRADE 4-H MEMBERS

### Cloverbuds (Kindergarten thru grade 2 ONLY)

Discover 4-H through experience in expressive arts, mechanical science, environmental education, personal growth, animal science, and many more. Cloverbuds are restricted from showing animals at 4-H shows including fairs, but may enter non-animal exhibits.

## 3<sup>rd</sup>-13<sup>th</sup> GRADE 4-H MEMBERS

### Adventures

Learn how to camp safely in all weather conditions; investigate camping equipment and clothing; build a campfire and cook a meal; practice tying knots and first aid; learn to use a map and compass.

### Aerospace

What you can do in this project: compare birds and airplanes; make a space helmet; learn to read a map; identify types of aircraft; discover how weather affects flying; build and fly a kite; make a hot-air balloon model; test a paper hang glider; build an altitude tracker; plan a flight route; discover the affects of gravity; explore life in space and aerospace.

### Archery (county-wide project)

This project covers the fundamentals of archery safety and marksmanship, understanding and making equipment, and shooting form, shooting with sights and compound bows.

**Note:** Leaders must be certified through the State 4-H Shooting Sports program. In order to represent Green Lake County 4-H at the Green Lake County Fair, all archery project members must meet project requirements.

### Basketry

Youth will learn the art of basketry and making and creating their own basket.

### Beef (county-wide project)

Identify various beef breeds; identify parts of a beef animal; halter-break and show a calf; fit and judge beef cattle; recognize and raise a healthy animal; present oral reasons during judging; learn about feed ingredients, behavior and parasites; study how to do nose-print identification; learn beef carcass composition and retail meat cuts; explore selection and judging; learn about careers, health, reproduction, etc.; discover how to market your animal and by-products.

### Bees

Learn about types of bees (honey & wax); plants that attract bees; equipment needed by beekeepers; acquire a colony of bees and learn to care for a beehive throughout the year; basic beekeeping operations that result in the production of extracted, chunk or cut

comb honey; increase the number of your honey bee colonies; increase honey production, producing special kinds of honey; bee societies; manage honey bee diseases and parasites.

### Bicycling

Learn the essentials for getting started safely; explore the basics toward lifelong cycling; learn safety, road rules and planning for a pleasant ride; choose a bike that's right for you; practice bike maintenance; learn road rules.

### Birds

Learn about the birds in your area, how to identify birds, how birds live in their environment and in the world of humans, their territorial behavior, migration patterns, building bird feeders and houses, banding birds, endangered species and game management.

### Cake Decorating

Learn how to choose and use cake decorating tools, make frosting, learn new decorating techniques, and work from a pattern or design your own.

### Candle Making

Youth will learn the art of candle making and create their own candle.

### Canoeing

Youth will learn how and where to canoe safely; select and care for equipment; explore aquatic environments; plan a canoe camping trip; canoe a river.

### Cats

Grooming a cat, breed identification, cat health, fitting and showing, nutrition, breeding, careers, teaching others and animal welfare.

### Child Development

Find out how you grow and develop; learn about the development of babies and toddlers; learn how to make toys safe for small children. Learn how to take care of yourself and others; see what makes your family special; discover how to match toys to ages of children; develop family rules; check for safety hazards. explore how to be an effective parent; gain experience as a teacher or coach; make babysitting and first-aid kits; check out child development careers.

### Clothing

In this project you will learn clothing construction and sewing techniques. As you progress, you will enhance your sewing skills beyond the basics and begin to select construction techniques you would like to learn and projects you would like to make.

### Creative Writing

Youth will explore language and creative expression; stimulate your creativity and self-expression; enrich your joy of book reading.





## Crocheting

Discover what to consider when buying yarn, crochet thread, crochet equipment. Learn crocheting, finishing techniques, and how to care for crochet items.

## Crops

Youth will learn about variety selection, germination and planting; learn about nutrients, harvesting and storage; explore uses and marketing strategies; compare production costs; establish and manage a forage crop; scout fields for pests, diseases and nutrition shortages; take an accurate forage sample; study growing techniques; explore types of grasses, including wheat, oats and barley.

## Dairy

Learn how to select, feed, manage, breed, fit, show, evaluate, and market a dairy animal. Activities include identifying dairy breeds, keeping a cow healthy and safe, exploring the needs of dairy animals, and learning about dairy organizations.

## Decoupage

Learn the art of decoupage by cutting and gluing. You might even have everything you need to make your project lying around your home right now.

## Demonstrations

Learn how to give a proper demonstration by teaching something you know about. Gain self-confidence, as well as communication skills by speaking in front of a group.

## Dog (county-wide project)

Learn how to train and show your dog. Activities include: Obedience, Showmanship, Rally, and Agility. Project members must attend County 4-H Dog Obedience classes with their dog to be able to represent 4-H at the Green Lake County Fair. Dogs must be at least 6 months of age to show. All dogs must be current with all of the appropriate vaccination requirements.

## Drawing & Painting

Youth will learn to draw with pencil, chalk, crayon, etc.; learn to blend and shade; make surface rubbings; paint with watercolor, oil and acrylics; mix colors; mat and frame your artwork.

## Electricity

You will learn how to understand the use of electricity; identify electrical materials; wire a simple circuit; work with electrical equipment; learn to read circuit diagrams; build a circuit and measure voltages; develop a basic electrical tool and supply kit; understand the symbols on wires and cables; identify electrical and electronic parts and devices; learn how to solder and prepare parts for assembly; assemble a circuit using a transistor.

## Entomology (Insects)

Youth will learn about insects, their behavior and life history; discover the parts of an insect's body; collect and compare insects; explore how insects communicate and move; learn how an insect protects itself;

explore insect habitats; create an insect display.

## Fishing

Youth will learn to identify types of tackle; organize a tackle box; identify different types of bait and fish in your area; learn to take proper care of your catch; find fishing information on the internet; cast a spinning rod and reel; learn to tie fishing knots; select a recipe and cook a fish; make artificial flies and lures.

## Flowers

Learn how to identify flower parts and their functions; plant flowers and make flower arrangements; give a presentation on flowers; prepare a flower exhibit; learn about plant needs and soil testing; select and start new plants and grow transplants; examine plants for insects and diseases; make a landscape plan; write instructions on how to force bulbs.

## Food Preservation

This project focuses on making jam, freezing, canning, pickling, and drying foods. Learn how to preserve food safely and about proper storage requirements.

## Foods & Nutrition

Learn more about what you eat and ways to prepare different foods. You can learn how to modify recipes for healthy living, make your own recipes, plan meals and menus. Learn to make basic muffins and biscuits. Learn to evaluate nutrition information and fad diets. Develop your own exercise program. Learn how to cook different cuts of meat.

## Forestry

Learn to identify forest types, forest products and trees; age trees by counting rings; understand forest competition; find a state forest; describe how leaves affect rainfall.

## Glasswork

Learn the art of working with glass to create something for your home.

## Goats (Dairy)

Gain hands-on experience in the goat project; select, manage, fit and show goats; learn responsible goat ownership; learn to keep your goat healthy; feed your goat for maximum production; prepare for kidding; develop judging skills; learn how to milk a goat properly; learn about genetics; diseases and breeding; study body-condition scoring and linear appraisal; understand bio-security and prevention measures; gain leadership and explore career opportunities.

## Health

Practice first-aid skills to treat basic injuries; learn how to respond to someone who is choking; assemble a first-aid kit. Identify your personal talent areas in health care; explore hygiene, nutrition and physical activities; share what you learn with others. Design your own fitness plan; track your plan and re-

view your progress; interview individuals in the health and fitness fields.

## Home Environment

Learn about home care; make small home decorative items for the home; explore the world of home interior design. Learn to handle home tasks and entertain guests. Learn the principles of home design; learn scale, balance and proportion in home design; use the principles of design to arrange your home; create storage centers and restore furniture.

### Horse (county-wide project)

So, you want a horse. Great! What breed, type, color and physical markings would you like. *Are you ready for daily care like grooming, feeding, stable care, foot care and safety? Learn the right equipment and riding skills; all a part of the 4-H Horse/Pony Project. This project is open to 4-H members who own, lease or manage a horse or pony. (Leasing and managerial access or use of another's animal is considered the Horse Project, not Horseless Horse.)*

### Horseless Horse (county-wide project)

In this project you don't have to have a horse or pony of your own. You need a desire to learn about horses. Explore horse behavior, terms, breeds, identification, body parts, selection, grooming, saddling and bridling, safety and equipment, and much more.

*This project is open to 4-H members **who do not own, lease or manage a horse.** (Leasing and Managerial is the ability to have full use of a horse or pony. That is the horse project **NOT** Horseless Horse.)*

## House Plants

Learn to identify plant parts and their functions; grow house plants and start a plant from a cutting; make a dish garden; prepare house plants for exhibit. Learn about plant seeds and soil; select and start new plants and grow transplants; plant a terrarium; examine plants for insects and diseases. Take a tour of a horticulture business; design a plant experiment; teach others how to grow house plants; compare different fertilizers: organic and chemical.

## Hunting

Learn the history, philosophy and laws of hunting. Learn to plan and equip yourself for a hunt.

## Jewelry Making

Learn the art of making all different pieces of jewelry, using different types of stones, beads and string.

## Knitting

Find out what to consider when buying yarn and knitting equipment. Learn knitting and finishing techniques, along with correcting errors. Learn also how to care for your knitted items.

## Leathercraft

Learn about the characteristics and uses of leather, along with the tools and equipment.

Make patterns and original designs and explore various leathercraft techniques.

## LEGO®

Use your imagination with LEGO® Building Blocks. Design and build just about anything—from food, to pets, to an action scene or something that floats.

## Model Rocketry

The model rocketry project is designed to help young people learn how to build and design rockets. Members will help make their dreams of sending a rocket into space, becoming an astronaut or perhaps someday visiting other planets by becoming involved in the experiences of this project.

## Mosaics

Mosaics are works of art created by using glass or ceramic tiles and grout to make a picture. Mosaics adorn the ceilings in cathedrals with elaborate details or they can be found in a simple pattern on the coffee table in your home. With practice, you can create a custom mosaic all your own.

## Photography

This project will show you how to care for a camera, basic composition and camera use. Advanced members will learn lighting techniques, creative use of camera controls and complex composition.

## Pottery

4-H pottery focuses on making pottery items by hand, glazing (coloring) the items, and then the pottery will be baked in a kiln.

## Poultry

The poultry project will help members learn how to select, feed, manage, breed, fit, show, and market your bird. It includes ducks, geese, turkeys, chickens, bantams, and pigeons.

## Quilting

Have fun in this project and learn all the techniques to designing and sewing your own quilt.

## Rabbits

Learning activities include identifying rabbit breeds, learning how to handle and show a rabbit, learning rabbit genetics and breeding, housing and care, planning and making a rabbit nest box, showing rabbits, and exploring careers related to rabbits, and more.

## Rubber Stamping

Learn how to use rubber stamps, inks, and other paper art techniques for a variety of creative projects.

## Scale Models

Learn how to assemble and create scale models of trains, trucks, cars, ships, motorcycles, submarines and tanks.





## Scrapbooking

Have fun in this project as you create your own scrapbooks and cards. Learn how to use various tools and techniques such as layering, rubber stamping, embellishing, journaling, and more. Members will learn how to layout scrapbook pages in a variety of ways and use different mediums to capture memories to last a lifetime.

## Self Determined

A self-determined project gives you the freedom to create your own project or expand a traditional one. If you do not see a project listed in this guide, you may create your own.

## Self Determined-Environmental Education: Nature

Select your own "Naturespace" and conduct an inventory of its environmental and ecological features. Explore habitats, populations and relationships through a variety of hands-on activities. Discover the concepts common to nature projects.

## Self Determined-Plant & Soil Sciences: Trees

Learn how to identify trees as they change through the seasons, how and where trees grow, how to measure the height of a tree, how to read a tree stump, identification of tree ailments, products from trees, making syrup and forestry-related careers.

## Sheep (county-wide project)

Learn how to select, feed, manage, breed, fit, show, evaluate, and market sheep.

## Shooting Sports

This project is an introduction to firearms, safe handling, ammunition, sighting, and caring for your equipment.

**Note:** All leaders must be certified through State 4-H Shooting Sports program.

## Soap Making

Making your own soap is a satisfying, inexpensive way to provide for your family's needs or create wonderful gifts for your friends. You can make soap using a kit, but making it from scratch enables you to choose your own ingredients and customize the soap to fit your needs.

## Swine (county-wide project)

Learn how to select a breed, feed, maintain weight, show and care for your market hog.

## Theatre Arts

This project is designed to give youth an experience of theater and related activities including learning what goes into creating professional theater, how to develop as actors and technicians, how to express themselves through movement, voice, speech, and characterization. They will participate in improvisa-

tion, theater games, basic script-writing, and perform a play.

## Tie Dying

Learn how to tie dye using various techniques. Be creative with your projects and have fun making some cool items to be proud of.

## Vegetables

Explore basic gardening practices, getting to know your soil, planning, preparing, planting, and caring for your garden. Explore harvesting and marketing methods. Study how to raise vegetables organically.

## Wildlife

Topics include identifying wildlife and their foods, interpreting wildlife habitat from aerial photographs, wildlife management practices and their effect on wildlife.

## Woodworking

Learn how to trace patterns, measure, mark, cut, nail, glue, sand and finish while making projects from wood. Use power tools, identify wood types and make great projects to use around the house.

## Youth Leadership

This project will help youth develop leadership skills by chairing committees, leading activities, helping adult leaders plan and lead a project in which you have established skills, and planning events of your choice. Youth Leaders are those youth 6<sup>th</sup> grade and up.

## Club Leadership

Club General Leader or Co-Organizational Leader, Project Leaders (must also enroll in project(s) that you would like to be a leader in) & Activity Leader.

**If a project is not listed and you would like to see it, please contact the Extension Office with the name and a brief description and we would be happy to add it for you!**



# How Does Learning Happen in 4-H?

## **The 4-H Slogan: “Learn by Doing”**

The 4-H slogan is the educational philosophy of the 4-H program. Since young people learn best when they are actively involved in the learning process, 4-H programs are designed to provide hands-on experiences that are reinforced through personal and group reflection and application “do-reflect-apply.” This research-based educational methodology is called “Experiential Learning.” The model below illustrates how 4-H experiences are intentionally developed to optimize learning.



## **Record Books**

Records are a way of recording a 4-H member's growth through learning and experience. Reflection is a very important part of the Experiential Learning Model we use in 4-H. Reflection allows you to think about the how's and why's of an experience or activity to identify what you learned through the experience, enabling you to then apply that learning in other situations.

4-H record keeping is helpful in teaching important life skills, such as self-discipline, decision making, goal setting, wise use of resources, communication, sharing, etc. Accurate and up-to-date records and portfolio not only provide a history of your 4-H experience, they are also helpful in successfully completing applications to colleges and universities, scholarships, awards, and employment.

Annually members complete and submit their record books to the their club general leader, where they are evaluated by volunteers with other members in the same category and age group. Members will be eligible to receive recognition at the county awards program for completing a record book. Record books are an excellent way to teach young people how to keep records and allows them to record progress toward achieving their goals. Record Books are typically due in September.

The Green Lake County 4-H Record Book Pages are available online at <https://greenlake.extension.wisc.edu/4-h-youth-development/4-h-forms/>

I pledge my  head to clearer thinking, my  heart to greater loyalty, my  hands to larger service, and my  health to better living, for my club, my community, my country and my world.



# 4-H Opportunities

Each club may have special activities throughout the year. In addition there are countywide activities and events that 4-H members may participate in. The listing below is only a partial listing. Many other project-related activities and events are held annually. 4-H opportunities are advertised in a variety of locations including: 4-H newsletter, Green Lake County 4-H Facebook page, and e-mailed via 4HOnline.

## **4-H Key Award**

The 4-H Key Award is the highest award available to members in 4-H. Qualifications: 4-H members must be at least in 9th grade or older, and must have completed at least three years of 4-H; completed one year of youth leadership; must fill out a record book and follow the Older Youth Awards procedure. Up to two members can be selected. Winners are announced at the 4-H Awards Program in October. This award is sponsored by the Farm Bureau.

## **4-H Scholarships**

The Green Lake County 4-H Leaders' Association annually awards two educational scholarships to support continuing education beyond high school to Green Lake County 4-H members. Members interested in applying, need to fill out the application that is found on our web site. Applications are typically due in September



## **Annual Volunteer Leader Recognition Banquet**

Each year a banquet is held to recognize all the registered volunteer leaders for the work they do in our 4-H program. These adults help make 4-H so much fun to be a part of and we like to thank them! This event is held the first Thursday of November and invitations are mailed out with all of the banquet information. Youth that were awarded scholarships for educational experiences also attend and have a short presentation. This is also where the 4-H Key Awards are presented to youth.

## **Annual Youth Awards Program**

This is an annual event held to recognize members for their outstanding efforts in projects and special award areas. To be considered for a county-level award youth complete and submit a record book to their club general leader for evaluation. This event is typically in November. Youth that were awarded scholarships for educational experiences also give a short presentation.

## **Cloverbud Workshops**

This is scheduled periodically throughout the year. The youth involved partake in projects led by the Green Lake County 4-H Ambassadors partnered with local 4-H clubs to offer hands-on programming to our youngest 4-H members.

## 4-H Camp

A variety of activities and learning experiences await summer campers including crafts, swimming, campfires, evening programs and more. Green Lake County 4-H partners with Adams, Juneau, Marquette and Waushara Counties for summer camp at Upham Woods Outdoor Learning Center, WI Dells for three days in June for youth in grades 3-8.

Youth in grades 9-12 have the opportunity to serve as camp counselors.



## Educational Travel Opportunities

Want to learn beyond your county? Check out these amazing opportunities! There is something for young people starting in 6th grade and above – and even for 4-H adult leaders! From a statewide conference at UW-Madison to a trip to the U.S. Space & Rocket Center in Huntsville, Alabama, there's an opportunity for you! Traveling with and meeting other 4-Hers is a wonderful Educational Experience that you do not want to miss.

- Space Camp, Grades 6-8
- Citizenship Washington Focus, Grades 10-12
- National 4-H Congress, Grades 10-12
- National 4-H Conference, Grades 10-12
- International Opportunities to Host or Travel

## 4-H Fall Forum *(state-wide opportunity)*

Held annually, 4-H Fall Forum is an opportunity for youth and adult leaders to attend the statewide training weekend with county and state staff. Fall Forum is planned by a team of youth and adult volunteers from the Wisconsin 4-H Leaders Council with the support of county and state staff to:

- Provide an educational opportunity for youth and adult volunteers
- Develop youth and adult partnerships
- Create an engaging and welcoming environment to facilitate discussion between counties
- Provide an opportunity for youth and adult volunteers to be involved in the planning and evaluation of statewide programs
- Encourage diversity of thought, perspective, interests, and people.





## Exhibiting at the Fair

The Green Lake County Fair is held annually in August. The Green Lake County Fair is a non-4-H entity. Fair provides many opportunities for youth involved in 4-H to learn and grow. Exhibiting 4-H projects at the fair is a wonderful way for young people to showcase and receive feedback and recognition for their work. Visit with your club leader to learn more about 4-H opportunities at the Green Lake County Fair.

The Green Lake County Fair is not run or organized by Green Lake County 4-H. Be sure to visit the Green Lake County Fair website (<https://greenlake.extension.wisc.edu/fair/>) to get necessary forms and information.







To enter 4-H projects in the Fair, each member must complete a Fair Entry Form. The Fair Entry Form is where the member lists their entries in the specific classes for display of projects at the Green Lake County Fair. Entry forms are due to the Fair Office July 1st. The Fair Entry Form can be completed electronically or paper form via the Fair website. It is the member's responsibility to find out the rules of the Fair and follow them, while representing Green Lake County 4-H and following Wisconsin 4-H Youth Development Code of Conduct.

In order to represent Green Lake County 4-H at the Fair, youth must be a member in good standing according to their club's constitution and bylaws.

#wi4hmovement



# The Wisconsin 4-H MOVEMENT

I pledge my  head to clearer thinking, my  heart to greater loyalty, my  hands to larger service, and my  health to better living, for my club, my community, my country and my world.

In Wisconsin 4-H we value:



BELONGING

MASTERY

INDEPENDENCE

GENEROSITY



# Wisconsin 4-H Youth Development Code of Conduct

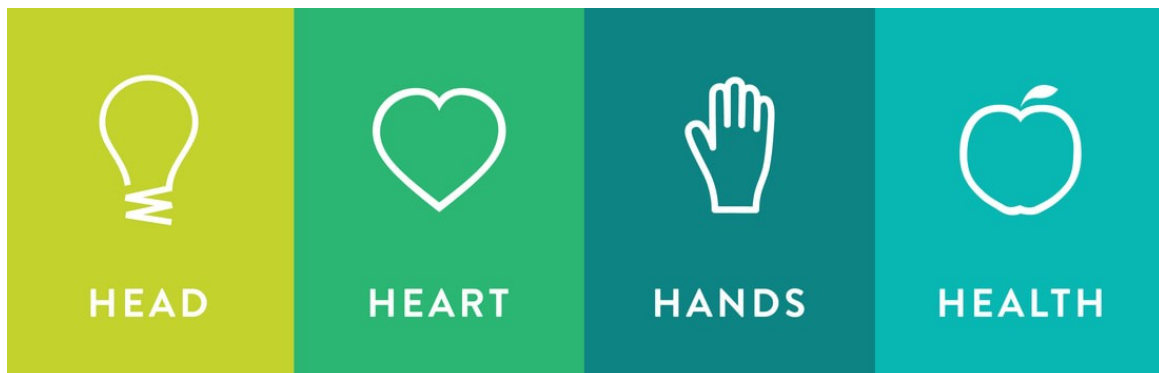
## 4-H participants will:

- Be curious to learn
- Be respectful to self and others
- Work to positively resolve problems or differences
- Accept guidance from Extension volunteers and staff
- Follow program rules, curfews, dress codes, policies, and rules of the facility being used
- Use appropriate language, exhibit good sportsmanship, and be a positive role model
- Comply with local, state, and federal laws
- Abstain from use of alcohol, illicit drugs, and tobacco during any 4-H program, activity or educational experience
- Fully participate in scheduled activities and orientations
- Respect others' property and privacy rights
- Abstain from child abuse (physical, sexual, emotional and neglect), harassment, hazing and bullying
- Refrain from all sexual activity/contact during any 4-H program, activity or educational experience
- Accept personal responsibility for behavior including any financial damage
- Follow safety rules

## Consequences for violating any part of this Code of Conduct may include, but are not limited to:

- Removal from leadership positions held
- Removal from participation in the event in which the Code of Conduct has been violated (at individual's expense)
- Forfeiture or repayment of financial support for the event
- Sanctions on participation in future 4-H events
- Suspension of membership
- Dismissal from 4-H

It is the responsibility of all program participants to reinforce the code of conduct and intervene when necessary to enforce the rules.



## 4-H Terms

**4HOnline**— Online system in which families enroll 4-H members and adult leaders. 4HOnline will also record important contact information.

**4-H Club Officers** - Members of a local 4-H club elected by the membership of the club to serve a one-year term. The usual officers include president, vice-president, secretary, treasurer, and reporter, however, additional officer positions can be added for larger clubs.

**4-H Focus Newsletter**- The bi-monthly Green Lake County 4-H newsletter that is mailed to every 4-H family and is available on the Green Lake County 4-H website. You may also view it through 4HOnline and Facebook. The *4-H Focus* provides information about 4-H meetings, opportunities, recognition and activities offered to 4-H members, leaders, and parents. For several events, this will be the only source of information.

**4-H Membership**- Youth in five-year-old kindergarten through one year beyond high school graduation, and not to extend beyond the age of 19 as of December 31 or enrollment year, are eligible to join 4-H. Membership is open to all youth regardless of race, color, creed, religion, sex, national origin, disability, ancestry, sexual orientation, pregnancy, marital or parental status.

**4-H Year** - October 1 to September 30 of the following year.

**Activity**- 4-H Activities are short-term educational experiences that all Green Lake County 4-H members may participate in.

**Adult Volunteers** - Adult volunteer leaders whose purpose is to facilitate and assist in planning club and county-wide 4-H events.

**Cloverbud**- Youth in five-year-old kindergarten, first or second grade are eligible to enroll as Cloverbuds and participate in the 4-H Cloverbud Project, which is designed to meet the developmental needs of this age group. Cloverbuds are valued members of the 4-H program and receive the same privileges as other 4-H members in club and county 4-H participation (there may be limitations on project areas or participation events due to safety reasons). This 4-H project is intended to introduce the members to 4-H. Cloverbuds do not enroll in any other projects.

**Community Service Project** - An activity conducted by a 4-H member for the benefit of the community.

**Constitution & Bylaws for Green Lake County 4-H Clubs & Groups**- All 4-H clubs and groups have a set of written rules for the operation. Each member should become familiar with the Club's or Project's Constitution and By-Laws early in the year. All Constitution and By-Laws can be found on Green Lake County 4-H website.





**GLC Gov. Center-** This abbreviation stands for the Green Lake County Government Center located at 571 County Road A, Green Lake. The county facility is home of the Green Lake County Extension Office (2nd floor, West Wing) and Training Room (Lower Level, West Wing), which serves as the meeting place for several 4-H events and activities.



**Graduation from 4-H-** Graduating from 4-H signifies that a member has successfully completed their career as a 4-H member. Some 4-H'ers graduate following high school graduation, however, individuals have an option to extend membership one year beyond high school graduation.

**Green Lake County 4-H Leaders' Association-** The Green Lake County 4-H Leaders' Association, is operated exclusively for the purpose of forming an association of adult and youth leaders to encourage leader training, and to supplement and enhance 4-H youth education and development of programs at the local, state and national levels.

**National 4-H Week-** The first full week in October is set aside each year to recognize and promote 4-H across the country. Each year a theme highlights the week. Many clubs have window displays or a special promotion of 4-H in their community.

**Projects-** 4-H Projects are long-term, educational experiences that only youth enrolled in that project may participate in. "Project" refers to the subject matter listed in the Green Lake County 4-H Enrollment Guide (i.e. Woodworking is a project, while birdhouse is an exhibit). Some examples of projects include: Photography, Foods, Cultural Arts, Archery, and Horses. 4-H members may add or drop projects until March 1st.

**Project Literature-** Guides for members and leaders written by University Specialists to serve as suggestion for areas of study in 4-H projects. Please contact the Green Lake County Extension Office if you are interested in any literature in a particular project.

**Record Book—**The Green Lake County 4-H Member Record Book is the official document to record all of the member's 4-H participation in a given year. Record Books provide a valuable educational opportunity for reflection, life skill development (including planning and record keeping), and recognition. Record Books are not required, but members are strongly encouraged to complete them. Awards will be given at the club level, depending upon each individual club's recognition process. It may also proceed on to the county level for special award recognition.

**Volunteer Orientation (VIP)-** All adult volunteers must attend the volunteer leader orientation session and undergo a background check before they are allowed to work with youth. For more information including dates and times, contact the Extension Office at 920-294-4032.



# Green Lake County Extension Office



*The Green Lake County Extension Office is located at:*

**Green Lake County Government Center**

571 County Road A

Green Lake, WI 54941

West wing—2nd floor—1st office on the left

**Office Hours**

Monday – Friday

8:00 am-4:30 pm

**Phone Number**

920-294-4032

**FAX Number**

920-294-4176

**Website**

[www.glc4h.org](http://www.glc4h.org)

## Green Lake County Extension Staff:

Pat Wagner, Area 14 Extension Director  
[pat.wagner@wisc.edu](mailto:pat.wagner@wisc.edu)

Morgan Martinez, 4-H Program Educator  
[morgan.martinez@wisc.edu](mailto:morgan.martinez@wisc.edu)

Kathy Ninneman, GLC Fair and Extension Office Coordinator  
[kathy.ninneman@wisc.edu](mailto:kathy.ninneman@wisc.edu)

Katie Gellings, Human Development & Relationships Educator  
[katie.gellings@wisc.edu](mailto:katie.gellings@wisc.edu)

Natasha Paris, Regional Crops Educator  
[natasha.paris@wisc.edu](mailto:natasha.paris@wisc.edu)

## Green Lake County Extension Agriculture/Extension Education & Fair Committee:

Ken Bates, Chair, District 5

Nancy Heistand, District 8

Nitz Krenz, District 15

Don Lenz, District 13

Nancy Hoffman, District 1

Curt Talma, District 3, Alternate



**Extension**

UNIVERSITY OF WISCONSIN-MADISON  
GREEN LAKE COUNTY

