

Green Lake County 4-H Focus Newsletter



April 2021

INSIDE THIS ISSUE

4-H Leaders' Association Minutes	
Morgan is on Maternity Leave	2
Guidance on Spring Programs	3-5
County Opportunities	6-7
State Opportunities	8-9
Community Service	10-11
Fair—Opportunity to Help	12
2021 Fair Judging Schedule	13

Green Lake County 4-H Website:

glc4h.org

State 4-H Website:

<https://4h.extension.wisc.edu/>

4-H Animal Science Events:

<https://fyi.extension.wisc.edu/wi4haganimalscience/>

Wisconsin State Fair Website:

www.wistatefair/fair/



Congratulations to the Country Clovers 4-H Club for receiving the Grand Prize entry in the 2020 Cedar Crest Ice Cream Flavor Creation Contest!

They will be awarded \$500 along with an ice cream party. And the best is that their winning flavor will be available through Cedar Crest this summer for everyone to enjoy and featured at State Fair as well and possibly at our Green Lake County Fair too!

The four finalists will receive a Cedar Crest Ice Cream party and those include: Cleveland Challengers 4-H Club, Waukesha County, Flavor: Cranberry Frost; Champion Spark Plugs 4-H Club, Kewaunee County, Flavor: Bunny Fluff; Aniwa Rockets 4-H Club, Langlade County, Flavor: Fair Food-Prairie Pioneer 4-H Club, Waukesha County, Flavor: Red Velvet Cookie Crumble.

According to Brenda Scheider, Executive Director of the Wisconsin 4-H Foundation, the contest is a great opportunity for 4-H youth to work together to develop and name their flavor. "The most exciting part of the contest is the winning flavor will be available through Cedar Crest this summer."

The annual contest has already yielded popular flavors including last year's winner, Wisconsin Campfire S'more created by Springbrook 4-H Club of New Richmond, Deep Woods, created by the Badger Boosters 4-H Club of West Bend, and Deep Space, developed by the Baraboo Valley 4-H Club.

A panel of ice cream experts chosen by Cedar Crest judged the entries. The company manufactures more than 80 flavors of ice cream, along with frozen custard, gelato and sherbet at its Manitowoc, Wisconsin, plant, and distributes products in five states. Many of the flavors now produced by Cedar Crest, like Wisconsin Campfire S'more, are a result of the contest.

4-H LEADERS' ASSOCIATION

• March 4, 2021 Zoom Meeting •



President Gina Fleegal called the meeting to order. Members present were...Tammy Goettl, Linda Ebert-Swanke, Brenda Oft, David Oft, Sadie Goettl, Christie Galow, Jordan Galow, Beth Howman-Combs, Joanne Klatt and Christa Van Treek, Marquette County 4-H Youth Development Educator.

- Secretary's report--Motion to approve. M--Brenda, S--Tammy. Motion carried.

- Treasurer's report--Filed for audit.

Correspondence: none

Ambassadors

- No update. Possible April meeting

Archery Project

- No update. Shoots to begin in May

Dog Project

New A-frame built for dog agility

Horse Council

- Held meeting on March 1--2 youth gave presentations
- Next meeting: May 3

Livestock Council

- Next meeting: April 20 at 7:30 p.m. via Zoom. Connection information posted on 4-H website

- Sign up for auction responsibility. Information posted online.
- YQCA--all youth showing animals need to complete it online
- Tagging forms were due March 1

4-H Program Educator--Christa Van Treek, Marquette County

- No changes at state level

Fundraising Committee

- Good start with donations coming in
- Thank yous are being mailed out as donations come in

Educational Opportunities & Awards Committee

- Record books are updated on the website. Need to finalize spreadsheet
- Key Award and Academic Scholarship applications are due March 5

Next meeting: April 8, 2021 at 7:00 P.M. (Connection information posted on 4-H website). Heidi Hensel Buntrock, Waushara County 4-H Educator, will attend the April meeting.

Motion to adjourn the meeting. M--David, S--Brenda. Motion carried.

*Respectfully submitted by,
Tammy M Goettl, Secretary*

Morgan is on Maternity Leave

The Green Lake County 4-H Program Educator is on leave until May. Please reference the image below for who to contact with 4-H questions while she is away. If you are unsure where to direct your question, contact Kathy at the Extension Office and she will help you!

Who to contact while Morgan is on leave?

Enrollment and County Questions

- 4HOnline/Enrollment
- Green Lake Co. 4-H Program
- 4-H Clubs
- County-wide 4-H Groups

Kathy Ninneman

kathy.ninneman@wisc.edu

920-294-4032

Extension and Participant Dilemmas

- Leader/Member Dilemmas
- Division of Extension Questions
- 4-H In-Person Program Plans (holding an in-person 4-H program/meeting/event)

Adam Hady

adam.hady@wisc.edu

Statewide Opportunities and Trainings

- 4-H Policies/ Guidelines
- Statewide 4-H Programs
- VIP Training and Information

Katie Sepnieski,

Christa Van Treek, or

April Martell

katie.sepnieski@wisc.edu

christa.vantreeck@wisc.edu

april.martell@wisc.edu

GUIDANCE ON SPRING PROGRAMS

(In effect 4/1/2021-6/1/2021)

1. What types of 4-H programs and activities are currently available for youth participation?

Indoor Programs, Outdoor Programs, and No Contact Programs.

All Indoor and Outdoor Programs require an approved checklist. Pre-event registration, notification, and post-event reporting are required, (please discuss plans for this with the Educator) [Here are some examples of plans that have been approved.](#)

Training for partners and volunteers is available and encouraged for all volunteers. The training FOR VOLUNTEERS is required for volunteers leading approved meetings or events.

Indoor Program Requirements:

- Indoor Programs limited to **4 hours**.
- Indoor Programs limited to a maximum of **30% of total room capacity or 50 persons** whichever is lower.
- For any event with more than 20 persons, participants must be divided into pods (20 or fewer), with additional distance between each pod (20 feet). Additional information about pods is below.
- Individuals cannot circulate between pods; however, instructors/facilitators who are not part of any pod can move between pods if they maintain not less than 10 feet of physical distance from each pod.
- 6 feet minimum distancing between participants is required at all times.
- Physical distancing is not required between members of the same household, however, each member is counted in the maximum group size.
- Hand sanitizing equipment (soap and water is preferred, or hand sanitizer with at least 60% alcohol, tissues, and no-touch trash cans) must be readily available and frequently used. Check with your 4-H Educator if there are supplies available to use.
- Face masks are required indoors

Plans will include how young people will access the unique spaces without congregating, including parking, drop-off, and pick-ups.

Outdoor Program Criteria Includes:

- Outdoor Programs have no time limit.
- Outdoor Programs are limited to **150 persons** total.
- Individuals are to maintain physical distance (6 feet) from persons outside their immediate household.
- For any event with more than 20 persons, partici-

pants must be divided into pods (20 or fewer), with additional distance between each pod (20 feet). Additional information about pods is below.

- Individuals cannot circulate between pods; however, an instructor or facilitator who is not part of any pod can move between pods if they maintain not less than 10 feet of physical distance from each pod.
- 6 feet minimum distancing between participants is required at all times.
- Physical distancing is not required between members of the same household, however, each member is counted in the maximum group size.
- Hand sanitizing equipment (soap and water is preferred, or hand sanitizer with at least 60% alcohol, tissues, and no-touch trash cans) must be readily available and frequently used
- Face coverings for Outdoor Programs are only required when activities may make maintaining physical distance challenging. Example: Shooting Sports instruction, hands-on activities, registration tables
- Plans will include how young people will access the unique spaces without congregating, including parking, drop-off, and pick-ups.

When making plans for outdoor gatherings it is important to have a back-up plan in case of bad weather.

No Contact Program Criteria Includes:

- No Contact Programs do not require a program approval form.
- No Contact Programs may include:
- "In a Box" activity kits delivered or picked-up without contact
- Pen Pal Programs

[National 4-H At Home Wisconsin Virtual Learning Community](#)

Online experiences require us to follow the [4-H electronic Communication policy](#). Program policy highlights include:

- Youth 12 and under need parental consent
- Youth 13 and older need parental notification
- Platform needs to be safe for young people and protect any personal information.
- An adult and young person may never be online together alone, a 3rd person must always be present.

2. When is Pre-approval needed?

Educators/Volunteers holding activities or meetings need approval any time that:

- An event, meeting or activity is being organized by a 4-H volunteer or Educator.

GUIDANCE ON SPRING PROGRAMS

(In effect 4/1/2021-6/1/2021)

- A 4-H club or group is participating in an event organized by other organizations.
- 4-H is co-sponsoring an event organized by other organizations.
- No-Contact Programs do not require a program approval.

Allow two weeks for Educators and the 4-H Program Manager to review and approve the Program Guidance and Approval checklist.

3. Who counts in the total group/pod number?

20 people or fewer including all youth and adults.

4. How do I set up multiple groups or pods for indoor and outdoor meetings?

Pods of 20 or fewer may rotate through a space as follows:

Indoor Rotation:

- The program form should detail the total numbers of youth and adults expected in the space at a given time, a description of the activity, and how they will be divided over time and space.
- The number of 4-H participants and volunteers using the entire site/building doesn't exceed 50 at a time.
- The total number of 4-H participants/volunteers using the space at one time doesn't exceed 30% of the capacity allowed in that space.
- There is sufficient time between groups to allow for cleaning and to avoid crowding – 15 minutes is the minimum.
- 4-H groups cannot co-mingle with other public users indoors. (i.e. no indoor trampoline, rock-climbing, bowling alleys, skating rinks that are in use by other users).

Example #1: Indoor Meeting: Room occupancy is 100 people

- 30% is 30 people

There can be a maximum 20 people in a pod, there are several options to consider:

- 1 pod of 20, 1 pod of 10
- 3 pods of 10
- 2 pods of 15
- Pods must be 20 feet away from each other.
- Each individual group is allowed up to 4 hours in the space.

Example #2: Indoor Meetings in Shifts: Room occupancy is 168 people

- 30% is 50 people, There can 3 groups of no more than 50, with sufficient time (at least 15 minutes) between groups, using the same room over the course of a day.
- Group 1: 9:00 am – 11:00 am

- Group 2: 11:30 am – 1:30 pm

Group 3: 2:00 pm – 4:00 pm

Outdoor Rotation:

- The group size remains capped at 150 outdoors, divided into pods of 20 or fewer with 20 ft between pods.
- If the outdoor space is a public/shared space there must be 20 ft. between the 4-H group and others.

The time between groups must be sufficient to ensure that groups do not come in contact with one another. (The time will vary by setup).

5. Can I attend an approved in-person 4-H meeting/activity if someone in my household just tested positive for COVID-19?

No. Our program approval process states "Registrants will be informed to stay home when they are experiencing any of the symptoms of COVID-19 or have had known contact with anyone with COVID-19 in the last 14 days."

6. Can I attend an approved in-person 4-H meeting/activity if someone in my household is in quarantine for COVID-19?

If the household member is quarantined because they have tested positive or they are symptomatic, you cannot attend. If, however, the household member does not have symptoms or a positive test for COVID-19 but is quarantined because of a potential exposure, other household members would not have had contact with a known carrier of COVID-19. In this case, other household members could attend an activity, but we ask that you still exercise caution and consider your own potential exposure before making a decision regarding attendance.

7. What is the status of 4-H overnight camps and travel programs?

Overnight camp and university-sponsored out-of-state travel programs continue to be canceled. National 4-H meetings and events have been canceled or moved online through the end of the summer. Guidance for Wisconsin 4-H summer programs will be posted later this spring.

8. Can 4-H staff and volunteers promote partnership opportunities in newsletters, emails, social media, etc?

Yes, 4-H Program Educators and 4-H Volunteers can continue to share information from trusted partners with recommended language:

"This event is not organized by UW-Madison Extension and you can check with its organizers for details on safety protocols."

Please note: 4-H Program Educators and 4-H Volunteers are **not** able to share any participant information with a partner organization.

GUIDANCE ON SPRING PROGRAMS

(In effect 4/1/2021-6/1/2021)

9. Can a 4-H Club or Group have food at meetings or programs?

- Food may not be consumed indoors in group program settings since face coverings are required.
- If food is necessary for the nature of the event, options include pre-packaged, homemade baked goods (i.e., bakery products that can safely remain unrefrigerated), or catered food packaged for individual participants that can be consumed outdoors or taken home.
- Those preparing and packaging food are required to wash hands, practice good hygiene and food safety standards, and wear a mask while preparing foods.
- We are not approving food samples or food prep demonstrations at this time.

Fundraiser food sales of pre-packaged items that are contactless may be allowed with approved plans.

10. How will Personal Protective Equipment

(PPEs) be provided?

In the event that you are unable to locate the required PPE's please contact your 4-H Program Educator for assistance.

11. Can a youth's enrollment in 4-H be extended if they aged out of the program?

No. 4-H programming is tied to developmental ages and stages, therefore, 4-H membership is open to all youth through one year beyond high school graduation and not to extend beyond the age of 19 as of December 31 of the enrollment year. Alumni are encouraged to continue their 4-H journey as volunteers, and, through Collegiate 4-H when possible.

12. What if our 4-H Club or 4-H Group has excess funds because of the COVID-19 pandemic?

Excess Funds policy for all 4-H Clubs and 4-H Groups is being suspended by the Division of Extension and Wisconsin 4-H for 2020-21 fiscal year.

EXTENSION PROGRAM GUIDANCE SUMMARY

	Current (through 3/31)	April 1 – June 1
Maximum Total Participants	Indoors: 10 or fewer at any one time regardless of room size. (see pod section) Outdoors: 50 or fewer (see podding section)	Indoors: Up to 50 total participants or 30% of room occupancy (whichever is lower), podding for groups over 20 Outdoors: up to 150 total, podding for groups over 20
Groups "Podding"	Indoors: Groups of 10, need separate rooms Outdoors: Groups of 10	Indoors: Groups of 20, can be in same space in large rooms (up to 30% of room occupancy) Outdoors: Groups of 20 *Program Checklist will ask details on how participants will be podded for programs with more than 20 total participants, unless a clear reason is stated why podding would not enhance safety
Total Duration of program	Indoors: 2 hours Outdoors: no specified limit	Indoors: 4 hours Outdoors: no specified limit

- **Not Changing in new guidance:**
- Continued Use of Face Covering
- No Eating Indoors
- Physical Distancing (6 ft with members outside household; 20 ft between pods)
- Cleaning

When there is more restrictive local guidance we must follow that rather than our guidance.

COUNTY OPPORTUNITIES

At Home Learning: Bread in a Bag and Butter in a Jar

On Saturday, January 16 4-H'ers connected via Zoom to explore how to make bread in a bag and butter in a jar! Throughout the morning we discussed

how yeast works in bread making, the science of making butter from heavy cream, and enjoyed a few ice breaker games throughout the session!



Dalton Doers 4-H Club member,
Wynter Kreier, participated in
the online calming jar
workshop held in February.



COUNTY OPPORTUNITIES



Upcoming County-Wide 4-H Meetings



Leaders' Association Visit the "4-H Leaders' Association" tab on the GLC 4-H website to register to receive Zoom meeting link and to view agenda.

- April 8, 2021 at 7:00 p.m.
- May 13, 2021 at 7:00 p.m.



Horse Council Visit the "Horse Council" tab on GLC 4-H website for Zoom meeting links.

- May 3, 2021 at 7:00 p.m.

Livestock Council Visit the "Livestock Council" tab on the GLC 4-H website to register to receive the **April 20, 2021 at 7:30 p.m.** Zoom **LIVESTOCK COUNCIL** meeting link and to view meeting materials (posted week prior to meeting).

2021 Green Lake County Fair Livestock Auction Participation Requirements

If you are planning on participating in the 2021 Green Lake County Fair Livestock Auction, make sure you familiarize yourself with the auction participation requirements set by the Green Lake County Livestock Council. This information can be found in more detail on the Green Lake County 4-H website under the "Livestock Council" tab.

Participation requirements:

- Complete livestock tagging information form by March 1
- Beef, sheep, and swine tagging completed by April 30
- Youth's family must sign up for a Livestock Council responsibility by May 1 and complete the responsibility.
- Complete annual YQCA certification by July 1
- By the Green Lake County Fair Mandatory Meeting (July 29), attend at least one Livestock Council meeting OR attend an educational experience. There is a list of virtual educational programs that would meet this requirement. If you participate in an educational experience for this requirement you must complete and submit a program evaluation form.

If you have questions contact Livestock Council President Jason Chapman at jchappy8072@gmail.com or the Extension Office at 920-294-4032.

Livestock Tags are in the UW-Extension Office for pickup

The Livestock tags are ready for pick up at the Green Lake County Extension Office. All tags and information are in a bag with your family name. The box is located in the Extension conference room. When you enter the office, first room on the right.



Kathy is back in the office from 8am to 4:30pm. County offices are closed this Good Friday.

If you're short tags or there was a mistake...please contact Tammy Goettl. She will have extras at her house just in case you need them.

Wisconsin Youth Livestock Program Presents 2021 Educational Programming

WYLP will be hosting a series of virtual educational programs throughout the spring. The complete list, recordings, and registration information can be located at <https://go.wisc.edu/r3x8lj>



- April 8– Use of Technology in Animal & Dairy Sciences using sensors and cameras.

Speakers: Dr. Guilherme Rosa and Dr. Joao Dorea

- May 13- Meat Science Cookery- Making and Cooking of Meat Products

For more information visit <https://go.wisc.edu/r3x8lh> or contact Bernie O'Rourke, UW- Madison Animal & Dairy Science Extension Youth Livestock Specialist at (608) 263-4304 or borourke2@wisc.edu.

...for my club,
my community,
my country,
and my world...

STATE OPPORTUNITIES



4-H FUN with

FORENSICS

FORENSICS
Examining the evidence

A 5-part short series intro to Forensic Science
Thursdays, April 8-May 6 at 6 PM via Zoom



Register today for the new [#FunwithForensics](https://tinyurl.com/FunwithForensics) virtual mini-camp! Open to youth in grades 6 through grade 13. Join us to participate in some great hands-on activities and learn about the real world of forensic science. Learn more and see session descriptions by visiting: <https://tinyurl.com/FunwithForensics>

Register now through 4-H Online
[#WI4hMovement](#) [#Opportunity4All](#)

2nd Annual Wisconsin 4-H Statewide Service Learning Project—Plarn Mats Project Activity Plan



According to EarthDay.org, about one trillion single-use plastic bags are used every day in the U.S. We've created a service project to put plastic bags to good use and help those in our community who are experiencing homelessness.

Youth involved in the Plarn Mats project will learn how to create plastic yarn (plarn) from bags, and then crochet those bags into mats. The mats will be donated to local organizations.

The full activity plan includes an overview of the whole project as well as separate instructions for different parts of the project:

- Making decisions about your plarn mats project
- Collecting and sorting bags
- Cutting plastic bags into loops
- Making plastic loops into plarn
- Crocheting the plarn mat
- Donating the plarn or plarn mats

Check out the web page for more information.

<https://4h.extension.wisc.edu/4h-resources/plarn-mats/>

4-H FUN with FORENSICS
April 8, 2021 @ 6:00 p.m.

FINGERPRINTS and FOOTWEAR Edition

Topics:

- Impression evidence - what is it and why does it matter?
- Things unseen and how to see them
- Use in forensics - inclusion/exclusion

Hands-on:

- Fingerprint balloons
- Show your shoes
- Lifting prints
- Fingerprint art

Appropriate for all ages - parental discretion encouraged on ending G&A portion

4-H FUN with FORENSICS
April 15, 2021 @ 6:00 p.m.

PHOTOGRAPHY Edition

Topics:

- What needs photographed?
- Special effect lighting
- Photo editing/enhancing

Hands-on:

- Settings on cameras (phone cameras are fine)
- Filters and true to reality
- Hidden writing

Appropriate for all ages - parental discretion encouraged on ending G&A portion

4-H FUN with FORENSICS
April 22, 2021 @ 6:00 p.m.

CRIME SCENE Edition

Topics:

- Roles at crime scenes
- Types of scenes
- Evidence collected
- TV vs Reality

Hands-on:

- Virtual crime scene
- Change blindness

Not appropriate for younger ages, parental attendance encouraged for middle schoolers. No graphic content will be viewed at any point, however sensitive topics are likely to come up in conversation - we are talking about crimes, some of which are violent and involve death.

4-H FUN with FORENSICS
April 29, 2021 @ 6:00 p.m.

DRUGS Edition

Topics:

- What are drugs?
- Safety concerns
- How drugs are tested

Hands-on:

- Paper towel chromatography
- White substance analysis
- Guess the drug from the picture

Parental discretion and attendance encouraged for younger ages. No graphic content will be viewed at any point and most of the conversation will not involve violent crime, however drugs will be discussed as well as some of their effects and hazards.

4-H FUN with FORENSICS
May 6, 2021 @ 6:00 p.m.

DNA Edition

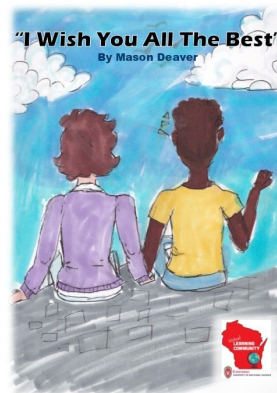
Topics:

- What is DNA?
- Uses in forensics
- Preserving the evidence

Hands-on:

- Where to look for DNA in "crime scene" photo

Not appropriate for younger ages, parental attendance encouraged for middle schoolers. No graphic content will be viewed at any point, however sensitive topics could come up in conversation - DNA is used for crimes that are often of a violent and/or sensitive nature which may come up in G&A.



Virtual Learning Book Discussion Group

All WI teens and adults are invited to join the Virtual Learning Community's new book discussion group! Sign-up by May 1st for this four-session series and have a free book sent right to your home! (Special thanks to our youth artist Jasper, WI 4-H member, for the featured artwork.)

Book: I Wish You All the Best, includes topics of friendships, depression, acceptance, pronoun use, bullying, love, gender nonconformity, and family dynamics

When: Tuesdays 4:00 pm - 5:30 pm

Dates: June 15-July 6, 2021

Where: Zoom

Register here:

<https://4h.extension.wisc.edu/virtual.../vlp/participate/>

STATE OPPORTUNITIES

4-H Canine Science Series

4-H Dog Projects Members! Explore the monthly 4-H Canine Science Series online learning opportunity from our friends at Virginia 4-H!

April 21 - Agility

To view the entire series visit their website to find recordings and resources from previous sessions as well as information and registration about other upcoming sessions at <https://sites.google.com/vt.edu/caninescience/home>. On the website under the "Resources" tab previous session recordings and resources can be found!

2021 Wisconsin State 4-H Dog Show

The show will be held on August 20-22, 2021 in Tomah at the fairgrounds. The plan is to use the outside rings and the dairy and gold buildings for the shows.

For more information you may visit the Monroe County Extension Office website: <https://monroe.extension.wisc.edu/>.



[Virtual Learning Community – Wisconsin 4-H](#)



On Tuesday, February 16 the Wisconsin 4-H offered a six week Easy as Pie 4-H Spin Club, which ran for six consecutive Tuesday evenings at 7:30 pm. David Oft, right, participated in the club where members learned how to make a different pie each week.

Easy as Pie 4-H SPIN Club



Week 1: Members learned how to make a Banana Cream Pie.

Week 2: Members learned to make an oil based single layer crust and a Breakfast quiche (*missing piece went to David's Grandpa for his breakfast the next day*).

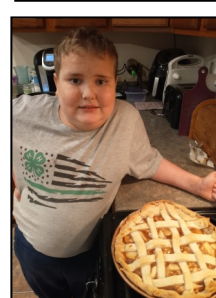
Week 3: Members learned how to make a Lemon Meringue Pie.

Week 4: The youth learned how to make pot pie. They could customize it to their liking. David chose Chicken with potatoes and corn.

Week 5: Members learned how to make a double crust fruit pie. David chose an apple pie and learned how to make a lattice crust.

Week 6: The youth were able to choose whatever pie they wanted to make and they learned about evaluating pies and get tips for making pies for the fair. David chose to make a chocolate cream pie and he made his own whipped cream too!

Great job, David, you look like you've aced the Pie Club!

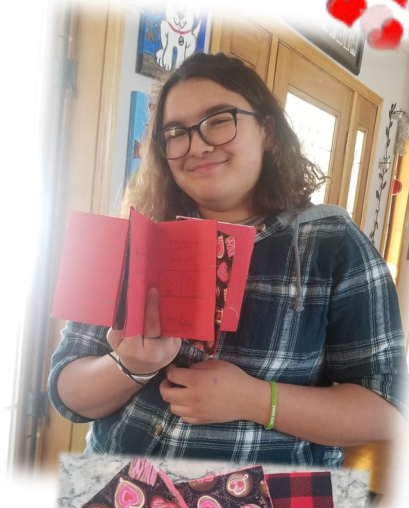


WISCONSIN 4-H YOUTH DEVELOPMENT

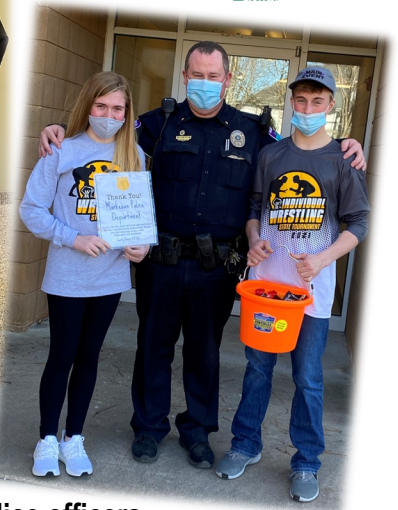
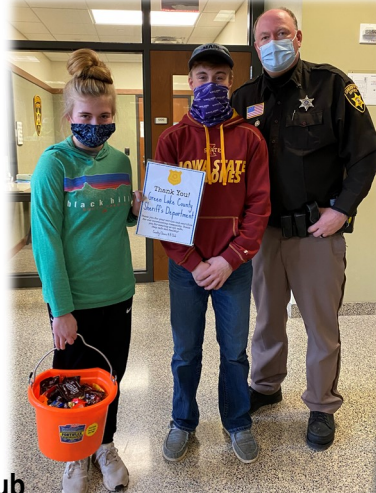
#OPPORTUNITY4ALL



COMMUNITY SERVICE



The Country Clovers 4-H Club members decided for their January Community Service project to make their own handmade Valentine's cards. They delivered them to Markesan Resident Home, Barrett House/Samuel Grove and Kindred Hearts residents. And some even received some yummy treats!



The Country Clovers 4-H Club members also took the llamas for a visit to the Markesan Resident Home, sent flowers to the Markesan Schools to thank them for keeping the kids safe in the community and also took candy bars to Green Lake and Markesan police officers thanking them for their service.

COMMUNITY SERVICE

Dalton Doers 4-H Club members did a food drive for their February Community Service project. The youth were challenged to collect 1,000 “points” of food. Most items were 1 point each with some like personal care items being 2 points. The youth collected over 1,200 points!



OPPORTUNITY TO HELP

The Green Lake County Fair needs volunteers to create some fun stand up wood cut outs. These make great photo ops for kids, adults, whomever, to photograph their memory at the fair. If this sounds of interest to you, we would love to hear from you!



What's Needed:

Supplies to make stand up wood cut outs to display at the fairgrounds (rabbit, chicken, cow, steer, pig, sheep, horse, dog, vegetables, flowers, tractors etc) for fairgoers to show their face in one of the cut outs for a cute photo op. Size should be anywhere between 4-8' in height and finished for outdoor use.

This is a great project for a club or organization who would like to donate their talents and supplies and create these for the fair. Below are just some examples—use your creativity!

If you are interested, please contact Kathy Ninneman, Fair Coordinator: 920-294-4032 or email fair@co.green-lake.wi.us.



All finished items would become the property of the Green Lake County Fair.



2021 FAIR JUDGING SCHEDULE

SATURDAY, JULY 31, 2021

8:00 am: Horse Show (*horse arena*)

TUESDAY, AUGUST 3, 2021

*All non-animal judging (*Jr. & Open Class*)

*Booths

WEDNESDAY, AUGUST 4, 2021

Animals come in

Animal weigh-in

THURSDAY, AUGUST 5, 2021

*8:30 am: Goat judging (*show tent across from dairy barn*)

*9:00 am: Dairy judging (*show tent across from dairy barn*)

*9:00 am: Poultry judging (*outside small animal barn*)

*1:00 pm: Sheep judging (*sheep/swine barn*)

6:30 pm: Swine judging (*sheep/swine barn*)

FRIDAY, AUGUST 6, 2021

9:00 am: Beef judging (*show tent across from dairy barn*)

9:00 am: Dog Obedience judging (*entertainment tent*)

9:00 am: Rabbit judging (*outside small animal barn*)

SATURDAY, AUGUST 7, 2021

*9:00 am: Dog Agility judging (*agility course by track*)

*11:00 am: Half Pint Show (*show tent across from dairy barn*)

*2:00 pm: Archery Competition (*show tent across from dairy barn*)

**times or dates changed*









UW-MADISON EXTENSION
GREEN LAKE COUNTY

571 County Road A
Green Lake, WI 54941
Phone: 920-294-4032
(24-Hour Voicemail)
Fax: 920-294-4176
TTY: 711 Wisconsin Relay
Office Hours: 8:00 a.m.-4:30 p.m.
Located in the Green Lake County Government

#wi4hmovement



The Wisconsin 4-H MOVEMENT

I pledge my  head to clearer thinking, my  heart to greater loyalty, my  hands to larger service, and my  health to better living, for my club, my community, my country and my world.

In Wisconsin 4-H we value:

Being
Yourself



Find and share your
authentic sparks
and interests;

Belonging
Together



Recognize,
understand, respect,
and appreciate
each other;

Building
Connections



Grow positive
relationships with
peers and adults;

Discovering
Skills



Develop skills
through hands-on
learning to help you
succeed and thrive;

Exploring
New
Opportunities



Open the door to
new experiences,
projects and places;

Giving Back
to Your
Community



Make meaningful
contributions through
community service
and leadership.

BELONGING

MASTERY

INDEPENDENCE

GENEROSITY

Green Lake County Extension & Fair Office Staff

Adam Hady

Area 14 Extension Director
adam.hady@wisc.edu

Morgan Martinez

4-H Program Educator
morgan.martinez@wisc.edu

Kathy Ninneman

Fair & Office Coordinator
kathy.ninneman@wisc.edu

Katie Gellings

Health & Well-Being Extension Educator
katie.gellings@wisc.edu

Ben Jenkins

Agriculture Extension Educator
ben.jenkins@wisc.edu

Laura McCulley

FoodWise Nutrition Education Coordinator
laura.mcculley@wisc.edu

Green Lake County Agriculture/Extension Education & Fair Committee

Patti Garro, District 8; Katie Mehn, District 15; Keith Hess, District 17;
Bob Dolgner, District 1; Ken Bates, District 5; Alternate, Brian Floeter, District 6



An EEO/AA employer, University of Wisconsin-Madison Division of Extension provides equal opportunities in employment and programming, including Title VI, Title IX, and the Americans with Disabilities (ADA) requirements. Please make requests for reasonable accommodations to ensure equal access to educational programs as early as possible preceding the scheduled program, service or activity.