



# 2019 Green Lake County Fair

## August 1-4

### *“Travel the World at the Fair”*

# County Board Report

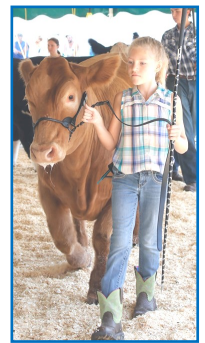
(figures from 2018 are in parentheses)

*It’s hard to believe that this is my last Green Lake County Fair Report! Even though this is bittersweet, I am looking forward to the next chapter of my life. I want to thank each and every one of you for your support of the Fair over the past 16 years. It has been an amazing journey with many ups and downs. Throughout my tenure, I grew more passionate about the Fair and was willing to put my all into making it a successful, educational community event geared for youth and agricultural education. I also became more aware of the importance of county fairs and the impact they have on youth and the Green Lake County community. We have exceptional youth in this County and it’s been an awesome experience to watch many of them grow during my time working with them. And the VOLUNTEERS! Without them this would not be possible. I have been so impressed with people that step forward to help and was educated over and over on the impact they have. It is with this passion I hope to be able to be a Green Lake County “fairgoer” for years to come. Last, but not least, the friends the connections, and the bonds I have made in 16 years has been the best part of this job. I cannot thank all these people enough for their support either. I will be forever grateful and hope to remain connected to all of them.*

*Thank you all!*

I am extremely proud to announce that the theme for 2019 was promoted by two 4-H/FFA youth that oversaw the organization of decorations for each building on the grounds along with contests and games for exhibitors during the Fair . These two young gentlemen stepped up into a leadership role and did an amazing job! As noted by officials from Penn State Extension, “4-H was founded on the belief that when kids are empowered to pursue their passions and chart their own course, their unique skills grow and take shape, helping them to become true leaders in their lives, careers, and communities.”

County fairs serve as showcases not only for agriculture, but for horticulture and tourism. There are educational opportunities abound from how livestock is raised to the production of hay and grain, vegetables, fruits and nuts to perfecting baked and canned goods. It is important to continually educate fairgoers about the importance of agriculture.



There were 193 (209) Junior exhibitors with 3,380 (3,590) exhibits and 55 (54) Open Class exhibitors with 1,001(1,050) exhibits. Premiums paid out totaled \$6,052.25 (\$6,183.25). The state still recognizes the value of the fair as an aid in development and continues to distribute state aid for premiums paid out by all organized agricultural societies presenting exhibitions. Green Lake County Fair state aid equaled \$4,504.43 (\$4,549.45).



The following Junior exhibitors were honored and privileged by having an entry chosen by the judges to be on exhibit at the Wisconsin State Fair held in early August:

Jordan Mace - *Woodworking*  
 Calob Congdon - *Crocheting*  
 McKenna Newton - *Home Environment*  
 Calob Congdon - *Clothing*  
 Kyle Bond - *Natural Science*  
 Calob Congdon - *Knitting*  
 Trevor Gohlke- *Cultural Arts*  
 Calob Congdon - *Clothing Preview*



Calob Congdon - *Health/Social/Political Sciences*  
 Tyler Draeger - *Photography*  
 Ethan Brunke- *Photography*  
 Alexis Dreger - *Photography*  
 Calob Congdon - *Family & Child Development*  
 Calob Congdon - *Youth Leadership*  
 Calob Congdon - *Cultural Arts*  
 Ethan Brunke - *Communications*



Agriculture works hard for Green Lake County every day. Family-owned farms, food processors and agriculture-related businesses generate thousands of jobs and millions of dollars of economic activity while contributing to local income and tax revenue. The Green Lake County Fair continued to make efforts in increasing agricultural education by providing Farmer Figg's Barnyard Science Shows, Inga Witscher, host of PBS Around the Farm Table, and with several sponsorships and grants, the Agri-Puppets.

The Agri-Puppets were self-contained and provided three shows daily, along with strolling entertainment. This program was made possible by the following sponsorships: A.F. Gelhar Sand Company, Adams-Columbia Electric, Bug Tussel Wireless/AT&T, Compeer Financial, Herman Schultz Fund (GLC/Ripon Community Foundation), Horicon Bank, Wal-Mart Community Foundation, Wisconsin Farm Bureau Federation's Ag in the Classroom, and Wisconsin Farmers Union.

The Youth Livestock Auction generated \$146,477.05 (\$163,902.91). There were 120 (130) large and small animals sold. Money generated from the sale helps youth finance future animal projects and their college education.



A & P Amusements provided the family-orientated carnival entertainment. Revenues generated totaled \$6,670.00 (\$6,634.00). Commercial space continues to be sold out well in advance of the Fair each year and revenue totaled \$3,200.00 (\$2,555.00).



The Fair provides non-profit organizations the opportunity to raise a large portion of their annual budget through fundraising. Green Lake County service organizations (*Green Lake Area Animal Shelter, American Legion 306, Green Lake County Farm Bureau, Green Lake County 4-H Clubs, Green Lake County Dairy Promoters, Kiwanis Club of Markesan, Green Lake County Home & Community Education, Green Lake County Horse Council and Green Lake County 4-H Leaders Association*) raised almost \$50,000 during the four-day Fair. These service organizations use the Fair as their primary fundraising source for a wide variety of charitable projects in Green Lake County. These fundraisers are a win-win for everyone as the organizations get to serve the community at the fair and then use the money they've raised to help the community throughout the rest of the year.

The Fairest of the Fair program started in 2008. The Fairest serves as a representative of the Green Lake County Fair with duties that include corresponding with local media, attending county events, serving as hostess at the Green Lake County Fair, and attending the Wisconsin Association State Convention to participate in the Wisconsin Fairest of the Fair program. The 2019 Fair Ambassador is Cole Chapman and Junior Fairest of the Fair is Kai Liptow. We thank them for being awesome spokespersons for the Green Lake County Fair and wish Cole good luck at the Wisconsin Association of Fairs State competition.



Rich Swanke of Princeton hosted the Truck and Tractor Pull on Thursday evening and a Truck Pull on Friday evening. Both events were well attended. Unlike last year, the weather did not cooperate. Right before the Derby was to begin the crowd was sent scattering for cover as a "mini storm" swept through. It took less than an hour for the Derby to wave the checkered start flag, but by that time most of those waiting to enter the grandstands had left. This year's event gate receipts totaled \$4,959.00 (\$8,975.00). Car count for the Demo Derby, once again proved promising, with second-year Promoter.



*"Volunteering is at the very core of being human. No one has made it through life without someone else's help"* (Heather French Henry). Volunteers are at the root of success of the county fair. The Fair would like to commend all the volunteers that gave of their time before, during, and after the Fair. Volunteers help out at the Fair Office, as Superintendents, gate tenders during track events, and countless other activities going on throughout the Fair. Without the assistance of these volunteers (consisting of youth and adults), from set-up to take-down, the Fair would not be the success it is. Volunteers are the most important resource community organizations have. The ability of people to work

willingly together for the betterment of their community and themselves is a valuable resource. The total number of volunteer hours also reflects the amount of community support the Fair receives.

The Fair established a charitable endowment, beginning with \$10,000, with the Oshkosh Area Community Foundation in 2009. The Green Lake County Fair Fund will support the future development of youth and the fair, along with general operations. Endowment funds are permanent charitable funds that provide long-term financial support. To date, four contributions have been made (Kinas Excavating, Inc., Markesan Chamber of Commerce, Norb Wiannecki Agency-Princeton and Paul Splittgerber). As of 10/31/19, the balance of the endowment is \$17,894.75.



The Fair was inspired this year to offer a Community Service Project called Project Pillowcase for the Ronald McDonald House. Advertising and instructions on how to sew the pillowcase began a few months prior to the Fair. Fairgoers were given the opportunity to bring their pillowcase(s) to the Fair in exchange for a "free ice cream cone" voucher. The project continued through early December with a total of 294 pillowcases being delivered to the Ronald McDonald House Charities Eastern Division. We had individuals, clubs, churches and even the Sheriff sewed a pillowcase! The HCE organization set up a time during the Fair to offer fairgoers a chance to sew their own pillowcase - materials and machines were provided. This proved to be very successful,

as was the whole project and very worthwhile! Thank you to all that donated!

The Friends of the Fair Partnership Program continues to attract businesses, organizations, and individuals who donate time, services/materials, and financial support to help enhance the Fair. Monies are primarily used to supplement family entertainment and youth exhibitor premiums. The following is a list of 2019 partners:

**Grand Champion Level (\$1,000 & Above)**

Alliant Energy Foundation  
Compeer Financial



**Champion Level (\$500-\$999)**

A.F. Gelhar Sand Company  
Adams-Columbia Electric  
Bug Tussel Wireless/AT&T  
Herman Schultz Fund: GLC/Ripon Community Foundation  
Horicon Bank  
Tom's Painting & Drywall  
United Cooperative  
Wal-Mart Community Grant  
Waste Management-FDL  
Wisconsin Farm Bureau Federation's Ag in the Classroom  
Wisconsin Farmers Union



**Blue Ribbon Level (\$250-\$499)**

Ballweg Implement  
Culligan  
"Golden Rule" Community Credit Union  
Markesan Veterinary Clinic  
Mashuda Contractors, Inc.  
Stagg Builders, Inc.



**Red Ribbon Level (\$100-\$249)**

Alliance Laundry Systems  
Berlin River Riders, Inc.  
Del Monte Foods  
Design Specialty Builders, LLC  
Ergo Bank  
Fairburn/Jolly J's HCE Club  
"Farmer" Grahn  
Fox River Patriots 4-H Club  
Glover Metal Building Erectors, Ltd.



**Red Ribbon Level (\$100-\$249)**

Grand River Workers 4-H Club  
Grand Valley Campground  
Hometown Broadcasting  
Kinas Excavating, Inc.  
Kutz Kustom Hog Roasting, LLC  
Kwik Trip  
Markesan Area Chamber of Commerce  
Milk Source  
Modern Rentals  
Moraine Park Technical College  
Pulvermacher Enterprises  
Ray's Sanitation  
Ross Motors  
Scott Construction, Inc.  
David & Helene Severson  
Spaulding Chiropractic Health Center  
State Farm-Caren Reich  
Stuart's Landscaping & Garden Center  
Sunrisers 4-H Club  
ThedaCare  
Three Hilltoppers 4-H Club  
Webster's Marketplace



**Pink Ribbon Level (\$50-\$99)**

Aneson Auto Body LLC  
Associated Veterinary Clinic  
Marge Bostelmann  
Country Clovers 4-H Club  
Green Lake Rotary  
Green Lake Senior Center  
Spoehr, Smits & Blazel Law Office  
Stahl Plumbing & Heating, Inc.  
Visioncare Incorporated.



*"The mission of the Green Lake County Fair is to provide positive youth development and leadership skills, along with promoting agriculture, family, and community involvement through education and tradition."*



**See you next year!  
August 6-9, 2020**